



**syngo.share / Release VA30C / 2021-12-16 / Revision 6272**

# **DICOM 3.0 Conformance Statement**

# Contents

<b>1</b>	<b>Introduction</b>	<b>4</b>
1.1	Remarks	4
<b>2</b>	<b>Implementation Model</b>	<b>5</b>
2.1	Application Data Flow Diagram	5
2.1.1	<i>syngo.share</i> view Data Flow Diagram	5
2.1.2	<i>syngo.share</i> import Data Flow Diagram	6
2.1.3	<i>webadmin</i> Data Flow Diagram	6
2.1.4	<i>webrenderserver</i> Data Flow Diagram	7
2.1.5	<i>DicomServer</i> Data Flow Diagram	7
2.1.6	<i>EventServer</i> Data Flow Diagram	9
2.2	Functional Definition of AEs	9
2.2.1	<i>syngo.share</i> view	9
2.2.2	<i>syngo.share</i> import	10
2.2.3	<i>webadmin</i>	10
2.2.4	<i>webrenderserver</i>	10
2.2.5	<i>DicomServer</i>	10
2.2.6	<i>EventServer</i>	11
2.3	Sequencing of Real-World Activities	11
<b>3</b>	<b>Application Entity Specifications</b>	<b>12</b>
3.1	<i>syngo.share</i> view	12
3.1.1	Supported SOP Classes for <i>syngo.share</i> view AE	12
3.1.2	Association Establishment Policies	14
3.1.2.1	General	14
3.1.2.2	Number of Associations	14
3.1.2.3	Asynchronous Nature	14
3.1.2.4	Implementation Identifying Information	14
3.1.2.5	Association Initiation Policy by Real-World Activity	14
3.2	<i>syngo.share</i> webview	14
3.2.1	Supported SOP Classes for <i>syngo.share</i> webview AE	15
3.2.2	<i>webrenderserver</i>	16
3.2.2.1	WADO-RS General Notes	17
3.2.2.2	WADO-RS Rendered Resources	17
3.2.2.3	WADO-RS Thumbnail Resources	18
3.2.2.4	WADO-RS Supported Transfer Syntaxes	19
3.2.2.5	WADO-RS Connection Policies	19
3.3	<i>syngo.share</i> import	20
3.4	<i>syngo.share</i> core	20
3.4.1	<i>webadmin</i>	20
3.4.2	<i>DicomServer</i>	20
3.4.2.1	Supported SOP Classes and Transfer Syntaxes	20
3.4.2.2	Association Establishment Policies	27
3.4.2.3	Association Initiation Policy by Real-World Activity	27
3.4.2.4	Association Acceptance Policies	28
3.4.2.5	Asynchronous DICOM Import	29
3.4.3	<i>EventServer</i>	30
3.4.3.1	Supported SOP Classes	30
3.4.3.2	Association Establishment Policies	30

<b>4</b>	<b>DICOM Media AE Specification</b>	<b>32</b>
4.1	Implementation Model . . . . .	32
4.1.1	Application Data Flow Diagram . . . . .	32
4.1.2	Functional Definitions of AEs . . . . .	32
4.1.3	Sequencing of Real-World Activities . . . . .	32
4.1.4	File Meta Information . . . . .	32
4.2	Application Entity Specification . . . . .	32
4.2.1	<i>syngo.share</i> view . . . . .	32
4.2.1.1	Real-World Activities . . . . .	33
4.2.2	<i>syngo.share</i> import . . . . .	33
4.2.2.1	Real-World Activities . . . . .	33
4.2.3	<i>webadmin</i> . . . . .	34
4.2.3.1	Real-World Activities . . . . .	34
4.3	Augmented and Private Application Profiles . . . . .	34
<b>5</b>	<b>Communication Profiles</b>	<b>35</b>
5.1	Supported Communication Stacks . . . . .	35
<b>6</b>	<b>Security Profiles</b>	<b>36</b>
6.1	Audit Trail Message Format Profile . . . . .	36
6.1.1	Event IDs . . . . .	37
6.1.2	Detailed Information per Event ID . . . . .	40
6.1.3	Audit Trails . . . . .	42
6.1.4	Configuration of Auditing . . . . .	42
<b>7</b>	<b>Configuration</b>	<b>44</b>
<b>8</b>	<b>Country-Specific Requirements</b>	<b>45</b>
8.1	France . . . . .	45
<b>9</b>	<b>Support of Extended Character Sets</b>	<b>46</b>
9.1	Supported Character Sets . . . . .	46
9.2	Configuration Capabilities . . . . .	46
9.3	Query Capabilities . . . . .	46
<b>A</b>	<b>DICOM Element List for Query/Retrieve Service Classes</b>	<b>48</b>
A.1	Supported C-FIND Element Requests on the Patient Level . . . . .	48
A.2	Supported C-FIND Element Requests on the Study Level . . . . .	48
A.3	Supported C-FIND Element Requests on the Series Level . . . . .	48
A.4	Supported C-FIND Element Requests on the Image Level . . . . .	49
A.5	Supported C-FIND Element Requests Issued by <i>syngo.share</i> view on the Study Level . . .	52
<b>B</b>	<b>List of Elements for Modality Worklist C-FIND Requests</b>	<b>53</b>

# 1 Introduction

This document is a DICOM 3.0 Conformance Statement that describes the DICOM capabilities of the following six products and components of *syngo.share*:

- *DicomServer*
- *EventServer*
- *syngo.share view*
- *syngo.share import*
- *webadmin*
- *webrenderserver*

The *DicomServer* is the central module for medical data processing in *syngo.share*. As a hospital-wide solution for PACS, image and document management, *syngo.share* collects all image data and documents within your hospital, processing them into the multimedia electronic patient record.

The *EventServer* is able to generate DICOM IANs (Instance Availability Notifications) based on internal events or incoming DICOM MPPS (Modality Performed Procedure Steps) requests and sends them to one or more AEs (Application Entities).

*syngo.share view* is a versatile multi-modality display system for DICOM images. It is able to retrieve and display DICOM images from specified directories, CD media, the *syngo.share* archive or, via Query/Retrieve, from third-party PACS. Additionally, *syngo.share view* supports the printing and exporting of DICOM images, series and studies on CD media.

*syngo.share import* is able to load DICOM images, series and studies from specified directories or CD media and import them into *syngo.share*.

*webadmin* is a web portal which provides browser-based solutions in *syngo.share*. It offers the means of downloading DICOM images from *syngo.share* and storing them in a specified directory. This happens via WADO-URI (Web Access to DICOM Objects by URI), as specified in DICOM 2019e PS 3.18.

*webrenderserver* provides a WADO-RS (Web Access to DICOM Objects by RESTful Services) interface for the retrieval of rendered and thumbnail resources, as defined in DICOM 2019e PS 3.18.

## 1.1 Remarks

This Conformance Statement is intended to aid in the validation of the integration of the *DicomServer*, *EventServer*, *syngo.share view*, *syngo.share import*, *webadmin*, and *webrenderserver* within a DICOM environment. This Statement is not meant to replace the validation with other DICOM equipment to ensure the intended, proper exchange of information. Thus, it is still important to ensure the proper interoperability of the intended DICOM integration.

The user must be aware of the following issues:

- The comparison of different Conformance Statements should be the first step towards an assessment of the interoperability within a DICOM environment.
- Testing procedures should be defined to validate the desired level of connectivity.

## 2 Implementation Model

### 2.1 Application Data Flow Diagram

#### 2.1.1 syngo.share view Data Flow Diagram

*syngo.share view* and *syngo.share view diagnostic*<sup>1</sup> provide a user interface for reading and exporting DICOM files – the FSR (File Set Reader) and FSC (File Set Creator), respectively – from portable media such as CDs, from network directories or the local file system. These functions are integral components of *syngo.share view*. Within the context of this Conformance Statement, the reading functionality is referred to as the *syngo.share view* FSR AE and the exporting functionality as the *syngo.share view* FSC AE.

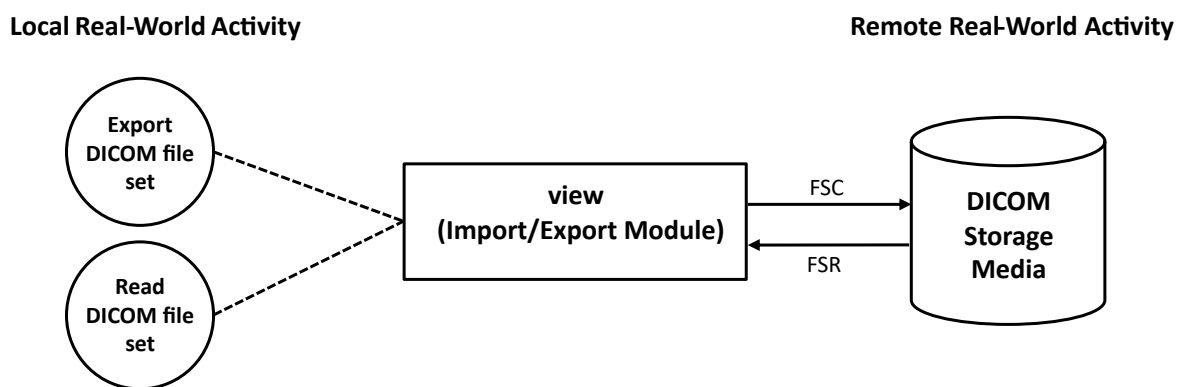


Figure 1: *syngo.share view* FSC and *syngo.share view* FSR Data Flow Diagram

Additionally, *syngo.share view* provides the ability to query third-party PACS and retrieve data from them. *syngo.share view* also provides report-reading capabilities for Structured Reports and the possibility to apply Grayscale Softcopy Presentation States (GSPS) as defined in DICOM 2013 PS 3.3. For display consistency, *syngo.share view* supports the DICOM Grayscale Standard Display Function (GSDF) as described in DICOM 2013 PS 3.14. In this Conformance Statement, the image-display capabilities of *syngo.share view* are referred to as the *syngo.share view* ID AE.

<sup>1</sup>In the following, *syngo.share view diagnostic* will not be mentioned explicitly each time, however, all information regarding *syngo.share view* applies to *syngo.share view diagnostic* as well.

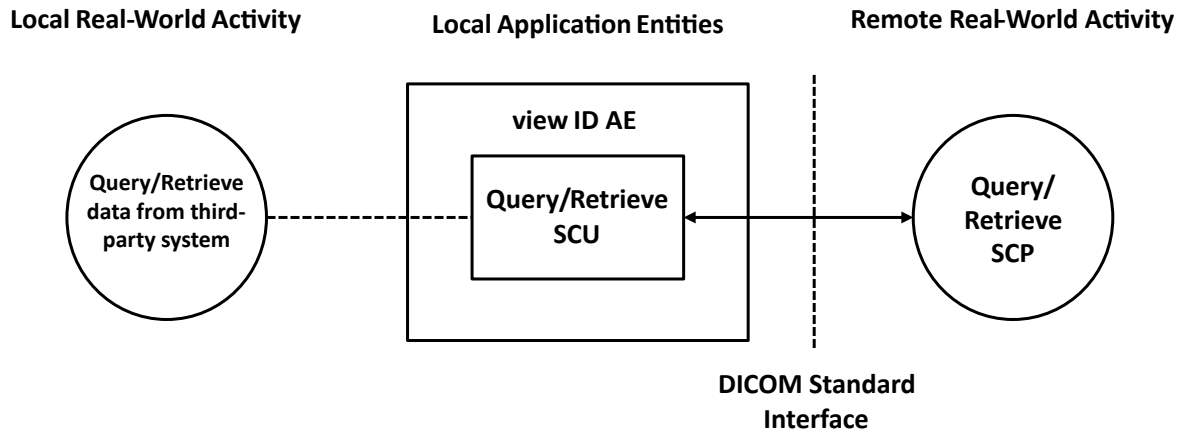


Figure 2: *syngo.share* view ID AE Application Data Flow Diagram

### 2.1.2 *syngo.share import* Data Flow Diagram

*syngo.share import* (i.e. the FSR) is able to read DICOM files from portable media such as CDs, from network directories or from the local file system. Loaded DICOM file sets can be imported directly into *syngo.share*. Within the context of this Conformance Statement, the importing functionality of *syngo.share import* is referred to as the *syngo.share import* FSR AE.

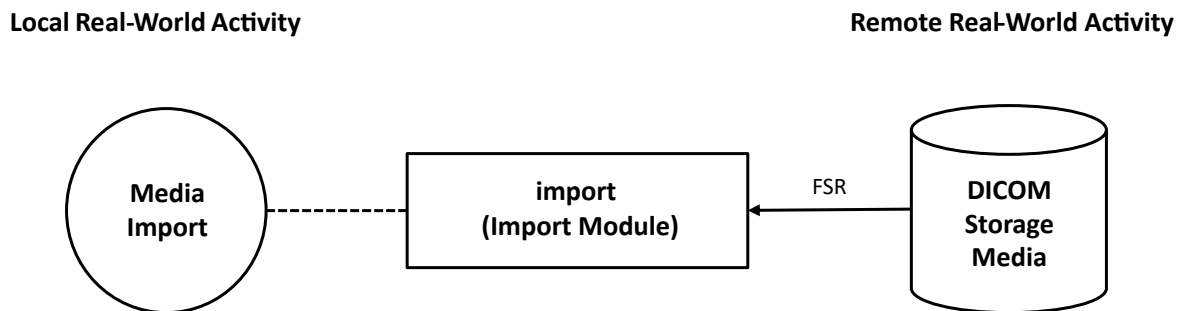


Figure 3: *syngo.share import* Data Flow Diagram

### 2.1.3 *webadmin* Data Flow Diagram

*webadmin* offers download possibilities for DICOM images from *syngo.share* by using WADO-URI requests. The downloaded files can be stored anywhere on portable media such as CDs, in network directories or on the local file system.

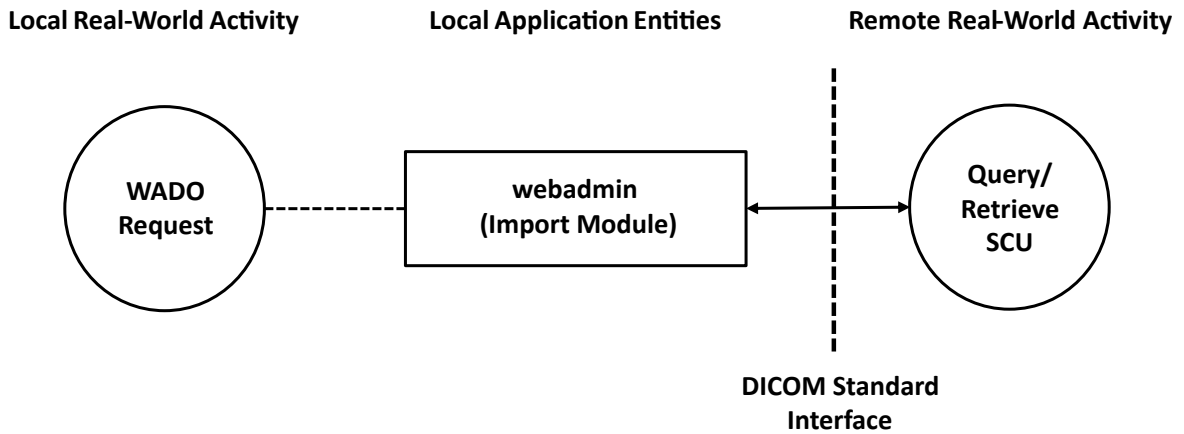


Figure 4: *webadmin* Data Flow Diagram

#### 2.1.4 *webrenderserver* Data Flow Diagram

*webrenderserver* provides a WADO-RS interface for the retrieval of rendered and thumbnail Resources. It receives and responds to WADO-RS requests from a remote AE targeting on DICOM images stored in *syngo.share*.

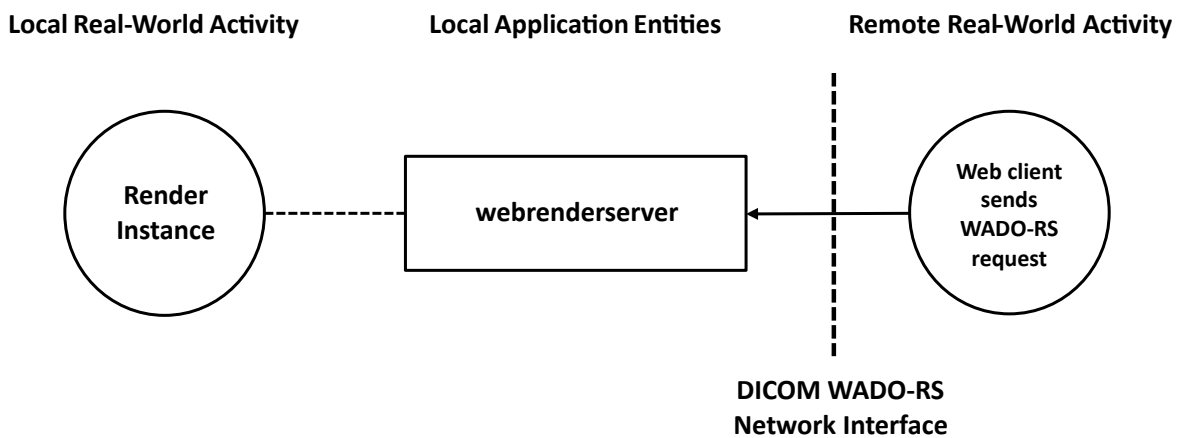


Figure 5: *webrenderserver* Data Flow Diagram

#### 2.1.5 *DicomServer* Data Flow Diagram

The *DicomServer* is implemented as a single AE which provides a set of various services. For each of these services, the *DicomServer* can act in a specific role.

By default, the various services are accessible through one predefined AE title (AET) of an actual *Dicom-Server* instance.

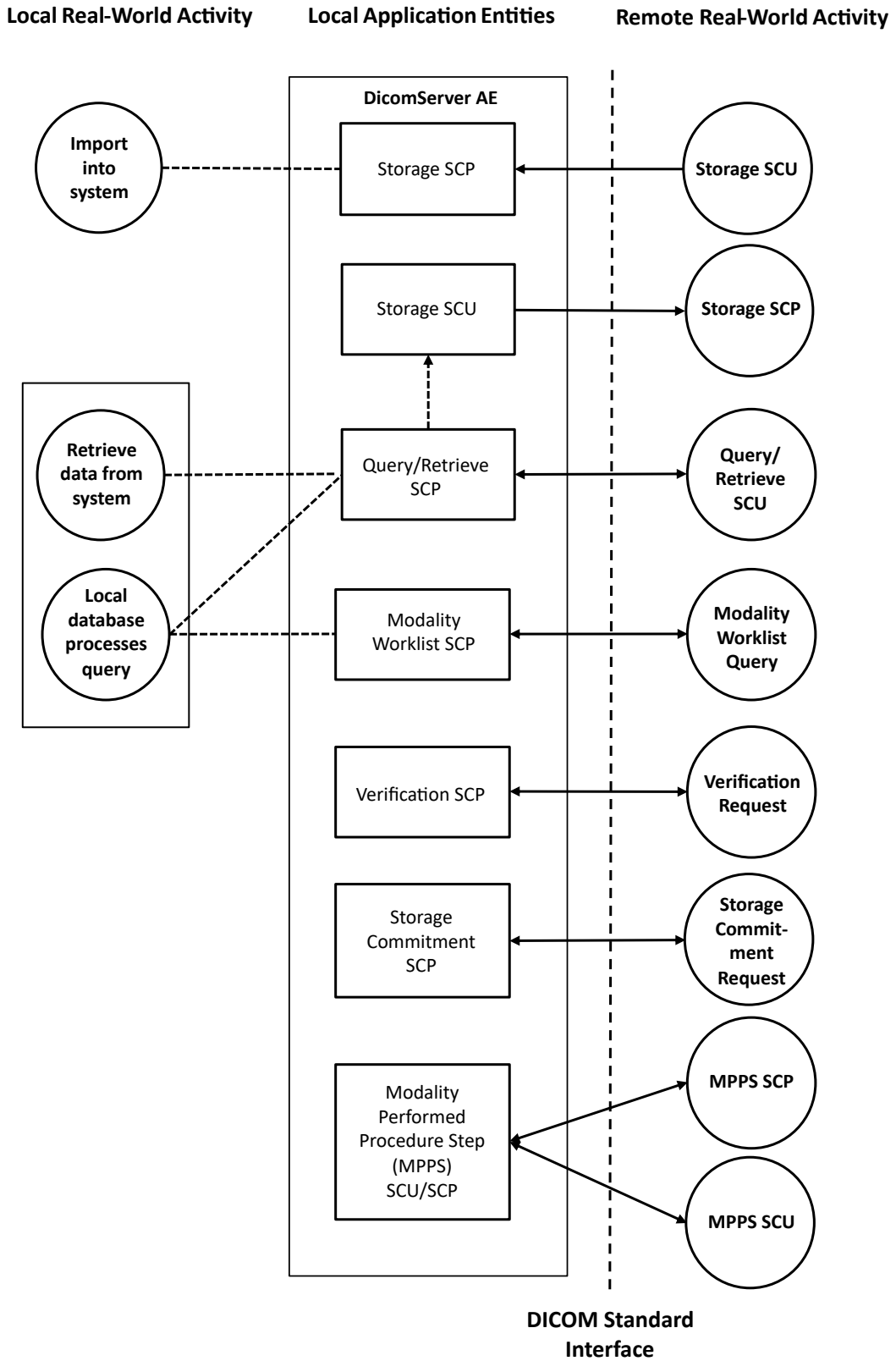


Figure 6: DicomServer Data Flow Diagram



## 2.1.6 EventServer Data Flow Diagram

The *EventServer* is able to generate DICOM IANs based on internal events or incoming DICOM MPPS requests. It is further able to route DICOM images, i.e. to act as a C-STORE SCU, based on internal events (document- or visit-centric) and during the archiving part of VNA send jobs. During the outbound verification part of VNA send jobs, the *EventServer* is able to send Storage Commitment Requests. Finally, the *EventServer* can also act as a C-FIND SCU and subsequently as a C-MOVE SCU when fetching DICOM studies and/or DICOM series based on internal events. In general, the *EventServer* sends to or communicates with the AE configured per event action or third-party VNA. For third-party VNAs, specific AEs can in turn be configured per service.

In order to fulfill these tasks, the *EventServer* supports the following services:

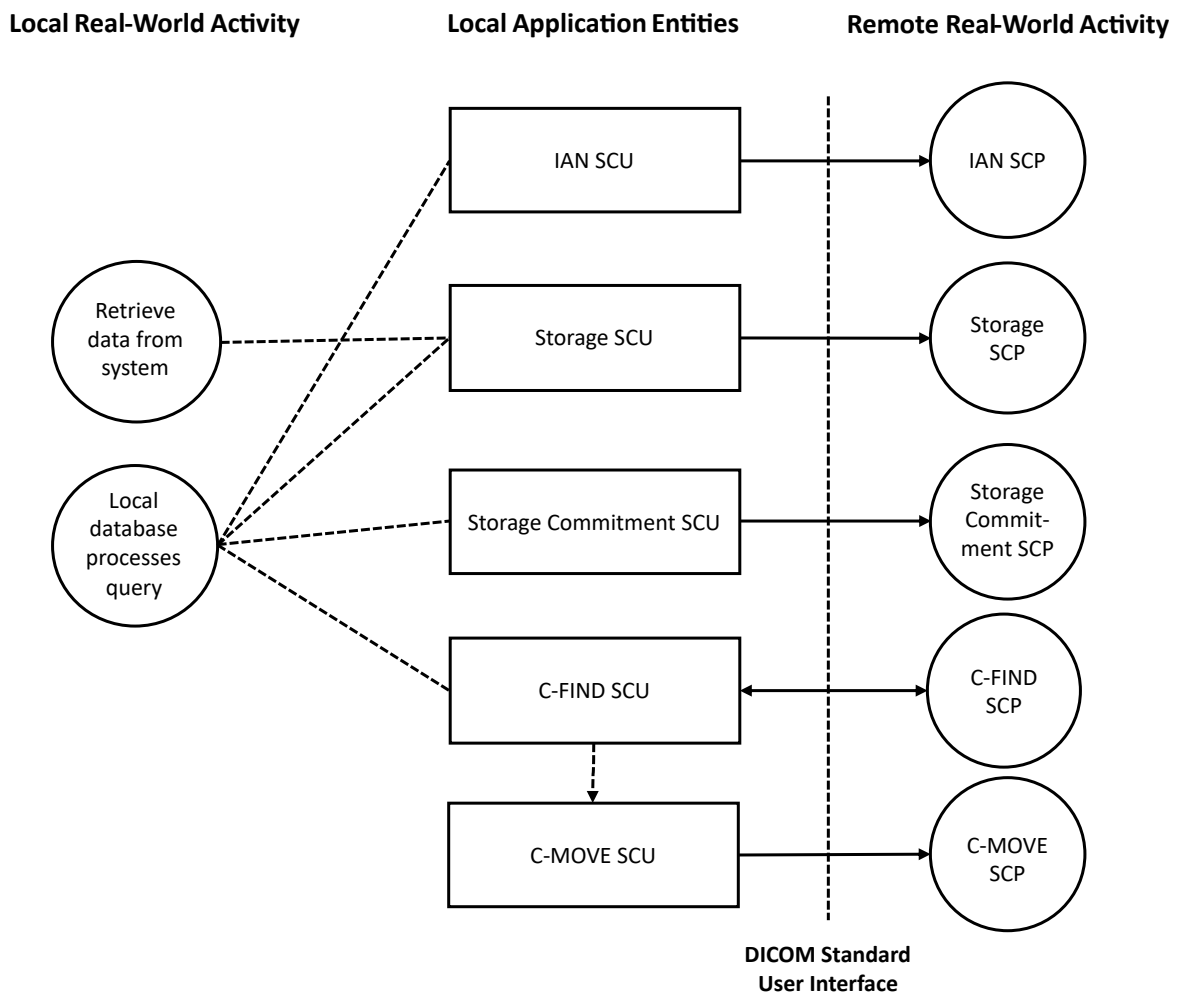


Figure 7: EventServer Data Flow Diagram

## 2.2 Functional Definition of AEs

### 2.2.1 syngo.share view

The *syngo.share* view FSR AE is able to read and the *syngo.share* view FSC AE is able to write user-selected DICOM files like DICOMDIRs or image objects which are compliant with DICOM 2013 PS 3.10. These files can be located either on the local file system or on DICOM 2013 PS 3.12-compliant media. Both AEs support the General Purpose CD-R Interchange Profile.

The *syngo.share* view FSC AE allows the usage of any other third-party CD editing software which can write directory structures to CDs. Thus, the *syngo.share* view FSC AE is also able to write DICOM file sets to DVD-RAM.

The *syngo.share* view ID AE is able to query third-party PACS using the C-FIND service and retrieve data using the C-MOVE service in accordance with DICOM 2013 PS 3.7. The third-party PACS can be queried using the Study Root Query/ Retrieve Information Model as defined in DICOM 2013 PS 3.4, C.3.2. Baseline behavior is supported for C-FIND SCU and C-MOVE SCU.

The *syngo.share* view ID AE is able to render images and Structured Reports received via Query/Retrieve or the *syngo.share* view FSR AE. All three general Structured Report document classes are supported. They are specified in DICOM 2013 PS 3.3. The contents are rendered as text with references to other instances. Referenced images can be shown and referenced GSPS can be applied. All spatial transformations, presentation LUTs and textual annotations are supported. Section 3.1 describes the supported SOP Classes for *syngo.share* view ID.

### 2.2.2 *syngo.share* import

The *syngo.share* import FSR AE is able to read user-selected DICOM files like DICOMDIRs or image objects which are compliant to DICOM 2013 PS 3.10. These files can be located either on the local file system or on DICOM 2013 PS 3.12-compliant media.

### 2.2.3 *webadmin*

The *webadmin* AE waits for a WADO-URI request from another application (e.g. an internet browser). Once received, *webadmin* queries *syngo.share* for the requested DICOM image and returns it to the requesting application.

### 2.2.4 *webrenderserver*

The *webrenderserver* AE waits for incoming WADO-RS requests from remote AEs (e.g. from a web browser) for rendered and thumbnail resources according to DICOM 2019e PS 3.18. A remote AE can request rendered and thumbnail representations of DICOM images stored in *syngo.share* on study, series, instance, and frame level.

### 2.2.5 *DicomServer*

The *DicomServer* AE waits for another application to connect and initiate a DICOM association. When another application connects, the *DicomServer* AE expects it to be a DICOM application. The *DicomServer* AE implements several DICOM Service Classes. In total, the following services are provided by this AE:

- The Verification SCP answers communication tests from remote applications (C-ECHO).
- The Storage SCP implements the answer to external C-STORE requests. It is able to receive incoming DICOM image files sent by remote DICOM applications (e.g., modalities or workstations) and add them to the *syngo.share* database.
- The Query/ Retrieve SCP implements the answer to C-FIND, C-MOVE and C-GET requests. Remote applications can request queries on the patient, study, series or image level using the Patient Root or Study Root Query model. The *DicomServer* AE functions as a Storage SCU when responding to a C-MOVE request.

- C-FIND Spanning forwards incoming C-FIND requests unaltered to an arbitrary number of configured Query/Retrieve SCP targets and returns their results.
- C-MOVE Spanning forwards incoming C-MOVE requests to an arbitrary number of Query/Retrieve SCP targets.
- The Modality Worklist SCP allows remote applications (e.g., modalities) to query the *syngo.share* database for modality worklists.
- The Storage Commitment SCP implements the answer to external N-ACTION requests and sends back the N-EVENT-REPORT response. The response can be sent on either the incoming or on a newly established association.
- The Modality Performed Procedure Step SCU/SCP implements the answer to external N-CREATE/ N-SET requests and forwards the received requests to all configured destinations. Forwarding can be disabled.

On association startup, the calling AET is looked up in the database to find a corresponding configuration. This configuration determines several aspects of the *DicomServer* behavior, including the number of services provided and the data accessible to the requesting AE.

### 2.2.6 *EventServer*

The *EventServer* AE generates DICOM IANs based on internal events or incoming DICOM MPPS requests and sends them to one or more AEs.

## 2.3 Sequencing of Real-World Activities

- The user can request the services of the *syngo.share* view and *syngo.share* import AEs at any time through the user interface.
- The user or the application performing the WADO-URI request can also request the services of the *webadmin* AE at any time.
- The user or the application performing the WADO-RS request can also request the services of the *webrenderserver* AE at any time.
- The services of the *DicomServer* AE must be requested according to the Service Class specifications in DICOM 2013 PS 3.3.
- The services of the *EventServer* AE are triggered automatically.

## 3 Application Entity Specifications

syngo.share consists of multiple DICOM Application Entities. The following chapter describes the conformance of those entities to the DICOM standard.

### 3.1 syngo.share view

The syngo.share view FSC and FSR provide functionalities for the sole purpose of handling DICOM media. The most commonly used DICOM Storage SOP Classes are supported, see Table 1. SOP Classes not listed in Table 1 can be displayed, however, the SOP Class-specific processing of the image data is not validated, e.g. multiframe images (Enhanced CT/MR) may not be displayed as expected.

#### 3.1.1 Supported SOP Classes for syngo.share view AE

The supported DICOM SOP Classes are described in this chapter.

Table 1: Support Storage SOP Classes in syngo.share view

SOP Class Name	SOP Class UID	SCP	SCU
Hardcopy Grayscale Image Storage	1.2.840.10008.5.1.1.29	-	✓
Computed Radiography Image Storage	1.2.840.10008.5.1.4.1.1.1	-	✓
Digital X-Ray Image Storage - For Presentation	1.2.840.10008.5.1.4.1.1.1.1	-	✓
Digital X-Ray Image Storage - For Processing	1.2.840.10008.5.1.4.1.1.1.1.1	-	✓
Digital Mammography X-Ray Image Storage - For Presentation	1.2.840.10008.5.1.4.1.1.1.2	-	✓
Digital Mammography X-Ray Image Storage - For Processing	1.2.840.10008.5.1.4.1.1.1.2.1	-	✓
Digital Intra-Oral X-Ray Image Storage - For Presentation	1.2.840.10008.5.1.4.1.1.1.3	-	✓
Digital Intra-Oral X-Ray Image Storage - For Processing	1.2.840.10008.5.1.4.1.1.1.3.1	-	✓
CT Image Storage	1.2.840.10008.5.1.4.1.1.2	-	✓
Enhanced CT Image Storage	1.2.840.10008.5.1.4.1.1.2.1	-	✓
Legacy Converted Enhanced CT Image Storage	1.2.840.10008.5.1.4.1.1.2.2	-	✓
Ultrasound Multi-frame Image Storage (Retired)	1.2.840.10008.5.1.4.1.1.3	-	✓
Ultrasound Multi-frame Image Storage	1.2.840.10008.5.1.4.1.1.3.1	-	✓
MR Image Storage	1.2.840.10008.5.1.4.1.1.4	-	✓
Enhanced MR Image Storage	1.2.840.10008.5.1.4.1.1.4.1	-	✓
Enhanced MR Color Image Storage	1.2.840.10008.5.1.4.1.1.4.3	-	✓
Ultrasound Image Storage (Retired)	1.2.840.10008.5.1.4.1.1.6	-	✓
Ultrasound Image Storage	1.2.840.10008.5.1.4.1.1.6.1	-	✓
Enhanced US Volume Storage	1.2.840.10008.5.1.4.1.1.6.2	-	✓
Secondary Capture Image Storage	1.2.840.10008.5.1.4.1.1.7	-	✓
Multi-frame Single Bit Secondary Capture Image Storage	1.2.840.10008.5.1.4.1.1.7.1	-	✓
Multi-frame Grayscale Byte Secondary Capture Image Storage	1.2.840.10008.5.1.4.1.1.7.2	-	✓
Multi-frame Grayscale Word Secondary Capture Image Storage	1.2.840.10008.5.1.4.1.1.7.3	-	✓
Multi-frame True Color Secondary Capture Image Storage	1.2.840.10008.5.1.4.1.1.7.4	-	✓
12-lead ECG Waveform Storage	1.2.840.10008.5.1.4.1.1.9.1.1	-	✓
General ECG Waveform Storage	1.2.840.10008.5.1.4.1.1.9.1.2	-	✓
Hemodynamic Waveform Storage	1.2.840.10008.5.1.4.1.1.9.2.1	-	✓

Table 1: Support Storage SOP Classes in syngo.share view...

... Table 1: Support Storage SOP Classes in syngo.share view

SOP Class Name	SOP Class UID	SCP	SCU
Grayscale Softcopy Presentation State Storage	1.2.840.10008.5.1.4.1.1.11.1	-	✓
X-Ray Angiographic Image Storage	1.2.840.10008.5.1.4.1.1.12.1	-	✓
Enhanced xA Image Storage	1.2.840.10008.5.1.4.1.1.12.1.1	-	✓
X-Ray Radiofluoroscopic Image Storage	1.2.840.10008.5.1.4.1.1.12.2	-	✓
Breast Tomosynthesis Image Storage	1.2.840.10008.5.1.4.1.1.13.1.3	-	✓
Nuclear Medicine Image Storage	1.2.840.10008.5.1.4.1.1.20	-	✓
Segmentation Storage	1.2.840.10008.5.1.4.1.1.66.4	-	✓
VL Endoscopic Image Storage	1.2.840.10008.5.1.4.1.1.77.1.1	-	✓
Video Endoscopic Image Storage	1.2.840.10008.5.1.4.1.1.77.1.1.1	-	✓
VL Microscopic Image Storage	1.2.840.10008.5.1.4.1.1.77.1.2	-	✓
Video Microscopic Image Storage	1.2.840.10008.5.1.4.1.1.77.1.2.1	-	✓
VL Photographic Image Storage	1.2.840.10008.5.1.4.1.1.77.1.4	-	✓
Video Photographic Image Storage	1.2.840.10008.5.1.4.1.1.77.1.4.1	-	✓
Ophthalmic Photography 8 Bit Image Storage	1.2.840.10008.5.1.4.1.1.77.1.5.1	-	✓
Ophthalmic Tomography Image Storage	1.2.840.10008.5.1.4.1.1.77.1.5.4	-	✓
VL Whole Slide Microscopy Image Storage	1.2.840.10008.5.1.4.1.1.77.1.6	-	✓
Basic Text SR Storage	1.2.840.10008.5.1.4.1.1.88.11	-	✓
Enhanced SR Storage	1.2.840.10008.5.1.4.1.1.88.22	-	✓
Comprehensive SR Storage	1.2.840.10008.5.1.4.1.1.88.33	-	✓
Mammography CAD SR Storage	1.2.840.10008.5.1.4.1.1.88.50	-	✓
Key Object Selection Document Storage	1.2.840.10008.5.1.4.1.1.88.59	-	✓
X-Ray Radiation Dose SR Storage	1.2.840.10008.5.1.4.1.1.88.67	-	✓
Encapsulated PDF Storage	1.2.840.10008.5.1.4.1.1.104.1	-	✓
Positron Emission Tomography Image Storage	1.2.840.10008.5.1.4.1.1.128	-	✓
RT Image Storage	1.2.840.10008.5.1.4.1.1.481.1	-	✓
RT Dose Storage	1.2.840.10008.5.1.4.1.1.481.2	-	✓
DICOS Digital X-Ray Image Storage - For Processing	1.2.840.10008.5.1.4.1.1.501.2.1	-	✓

Table 2: Supported Query/Retrieve SOP Classes

SOP Class Name	SOP Class UID	SCP	SCU
Study Root Query/Retrieve Information Model – FIND	1.2.840.10008.5.1.4.1.2.2.1	-	✓
Study Root Query/Retrieve Information Model – MOVE	1.2.840.10008.5.1.4.1.2.2.2	-	✓

Table 3: Supported Print Management SOP Classes

SOP Class Name	SOP Class UID	SCP	SCU
Basic Grayscale Print Management Meta SOP Class	1.2.840.10008.5.1.1.9	-	✓
Basic Annotation Box SOP Class	1.2.840.10008.5.1.1.15	-	✓
Presentation LUT SOP Class	1.2.840.10008.5.1.1.23	-	✓

## 3.1.2 Association Establishment Policies

### 3.1.2.1 General

The *syngo.share* view ID AE supports TCP/IP. When a user requests a C-FIND operation, it attempts to establish an association with a remote AE. The host, port and remote AE title are defined within the user configuration dialog. The maximum accepted PDU size is 16384.

### 3.1.2.2 Number of Associations

The *syngo.share* view ID AE supports a single association for C-FIND operations, meaning only one C-FIND operation is in progress at any given time. It must be finished or cancelled to allow for a new C-FIND. Only one C-MOVE opens an association to a remote AE at any given time.

### 3.1.2.3 Asynchronous Nature

The *syngo.share* view ID AE only allows a single outstanding operation on each association, meaning that it does not perform asynchronous negotiation.

### 3.1.2.4 Implementation Identifying Information

Implementation Class UID

1.2.276.0.7230010.3.0.3.6.1

Implementation Version Name

OFFIS\_DCMTK\_361

### 3.1.2.5 Association Initiation Policy by Real-World Activity

The *syngo.share* view ID AE initiates an association with a remote AE for C-FIND and C-MOVE requests. By default, the DICOM Implicit VR Little Endian Transfer Syntax (1.2.840.10008.1.2) is used, as defined in DICOM 2013 PS 3.5, 10.1. The accepted Transfer Syntaxes upon a sub-association within a C-MOVE are defined in Table 4.

**Table 4:** Supported view C-MOVE Transfer Syntaxes

SOP Class Name	SOP Class UID
Explicit VR Little Endian Transfer Syntax	1.2.840.10008.1.2.1
Explicit VR Big Endian Transfer Syntax	1.2.840.10008.1.2.2

## 3.2 *syngo.share* webview

The *syngo.share* webview and *syngo.share* webview diagnostic<sup>2</sup> FSC provide functionalities for the sole purpose of handling DICOM media. The most commonly used DICOM Storage SOP Classes are supported, see Table 5. For SOP Classes not listed in Table 5, viewing is possible, however, the SOP Class-specific processing of the image data is not validated. For example, multi-frame images (Enhanced CT/MR) might not be shown as expected.

<sup>2</sup>In the following *syngo.share* webview diagnostic will not be mentioned explicitly each time, however, all information regarding *syngo.share* webview applies to *syngo.share* webview diagnostic as well.

### 3.2.1 Supported SOP Classes for syngo.share webview AE

The supported DICOM SOP Classes are described in this chapter.

Note that SOP Classes for the purpose of image data storage require the DICOM Image Pixel Module to exist in order to display image data. Also, a value must be provided in the DICOM Element PixelData (7FE0, 0010), and the underlying Transfer Syntax must be supported.

**Table 5:** Support Storage SOP Classes in syngo.share webview

SOP Class Name	SOP Class UID	SCP	SCU
Hardcopy Grayscale Image Storage	1.2.840.10008.5.1.1.29	-	✓
Hardcopy Color Image Storage	1.2.840.10008.5.1.1.30	-	✓
Computed Radiography Image Storage	1.2.840.10008.5.1.4.1.1.1	-	✓
Digital X-Ray Image Storage - For Presentation	1.2.840.10008.5.1.4.1.1.1.1	-	✓
Digital X-Ray Image Storage - For Processing	1.2.840.10008.5.1.4.1.1.1.1.1	-	✓
Digital Mammography X-Ray Image Storage - For Presentation	1.2.840.10008.5.1.4.1.1.1.2	-	✓
Digital Mammography X-Ray Image Storage - For Processing	1.2.840.10008.5.1.4.1.1.1.2.1	-	✓
Digital Intra-Oral X-Ray Image Storage - For Presentation	1.2.840.10008.5.1.4.1.1.1.3	-	✓
Digital Intra-Oral X-Ray Image Storage - For Processing	1.2.840.10008.5.1.4.1.1.1.3.1	-	✓
CT Image Storage	1.2.840.10008.5.1.4.1.1.2	-	✓
Enhanced CT Image Storage	1.2.840.10008.5.1.4.1.1.2.1	-	✓
Legacy Converted Enhanced CT Image Storage	1.2.840.10008.5.1.4.1.1.2.2	-	✓
Ultrasound Multi-frame Image Storage (Retired)	1.2.840.10008.5.1.4.1.1.3	-	✓
Ultrasound Multi-frame Image Storage	1.2.840.10008.5.1.4.1.1.3.1	-	✓
MR Image Storage	1.2.840.10008.5.1.4.1.1.4	-	✓
Enhanced MR Image Storage	1.2.840.10008.5.1.4.1.1.4.1	-	✓
Enhanced MR Color Image Storage	1.2.840.10008.5.1.4.1.1.4.3	-	✓
Legacy Converted Enhanced MR Image Storage	1.2.840.10008.5.1.4.1.1.4.4	-	✓
Nuclear Medicine Image Storage (Retired)	1.2.840.10008.5.1.4.1.1.5	-	✓
Ultrasound Image Storage (Retired)	1.2.840.10008.5.1.4.1.1.6	-	✓
Ultrasound Image Storage	1.2.840.10008.5.1.4.1.1.6.1	-	✓
Enhanced US Volume Storage	1.2.840.10008.5.1.4.1.1.6.2	-	✓
Secondary Capture Image Storage	1.2.840.10008.5.1.4.1.1.7	-	✓
Multi-frame Single Bit Secondary Capture Image Storage	1.2.840.10008.5.1.4.1.1.7.1	-	✓
Multi-frame Grayscale Byte Secondary Capture Image Storage	1.2.840.10008.5.1.4.1.1.7.2	-	✓
Multi-frame Grayscale Word Secondary Capture Image Storage	1.2.840.10008.5.1.4.1.1.7.3	-	✓
Multi-frame True Color Secondary Capture Image Storage	1.2.840.10008.5.1.4.1.1.7.4	-	✓
12-lead ECG Waveform Storage	1.2.840.10008.5.1.4.1.1.9.1.1	-	✓
General ECG Waveform Storage	1.2.840.10008.5.1.4.1.1.9.1.2	-	✓
Grayscale Softcopy Presentation State Storage	1.2.840.10008.5.1.4.1.1.11.1	-	✓
X-Ray Angiographic Image Storage	1.2.840.10008.5.1.4.1.1.12.1	-	✓
Enhanced xA Image Storage	1.2.840.10008.5.1.4.1.1.12.1.1	-	✓
X-Ray Radiofluoroscopic Image Storage	1.2.840.10008.5.1.4.1.1.12.2	-	✓
Enhanced xRF Image Storage	1.2.840.10008.5.1.4.1.1.12.2.1	-	✓
X-Ray Angiographic Bi-Plane Image Storage (Retired)	1.2.840.10008.5.1.4.1.1.12.3	-	✓
X-Ray 3D Angiographic Image Storage	1.2.840.10008.5.1.4.1.1.13.1.1	-	✓
X-Ray 3D Craniofacial Image Storage	1.2.840.10008.5.1.4.1.1.13.1.2	-	✓

Table 5: Support Storage SOP Classes in syngo.share webview...

... Table 5: Support Storage SOP Classes in syngo.share webview

SOP Class Name	SOP Class UID	SCP	SCU
Breast Tomosynthesis Image Storage	1.2.840.10008.5.1.4.1.1.13.1.3	-	✓
Breast Projection X-Ray Image Storage - For Presentation	1.2.840.10008.5.1.4.1.1.13.1.4	-	✓
Breast Projection X-Ray Image Storage - For Processing	1.2.840.10008.5.1.4.1.1.13.1.5	-	✓
Intravascular Optical Coherence Tomography Image Storage - For Presentation	1.2.840.10008.5.1.4.1.1.14.1	-	✓
Intravascular Optical Coherence Tomography Image Storage - For Processing	1.2.840.10008.5.1.4.1.1.14.2	-	✓
Nuclear Medicine Image Storage	1.2.840.10008.5.1.4.1.1.20	-	✓
Segmentation Storage	1.2.840.10008.5.1.4.1.1.66.4	-	✓
VL Image Storage (Retired)	1.2.840.10008.5.1.4.1.1.77.1	-	✓
VL Endoscopic Image Storage	1.2.840.10008.5.1.4.1.1.77.1.1	-	✓
Video Endoscopic Image Storage	1.2.840.10008.5.1.4.1.1.77.1.1.1	-	✓
VL Microscopic Image Storage	1.2.840.10008.5.1.4.1.1.77.1.2	-	✓
Video Microscopic Image Storage	1.2.840.10008.5.1.4.1.1.77.1.2.1	-	✓
VL Slide-Coordinates Microscopic Image Storage	1.2.840.10008.5.1.4.1.1.77.1.3	-	✓
VL Photographic Image Storage	1.2.840.10008.5.1.4.1.1.77.1.4	-	✓
Video Photographic Image Storage	1.2.840.10008.5.1.4.1.1.77.1.4.1	-	✓
Ophthalmic Photography 8 Bit Image Storage	1.2.840.10008.5.1.4.1.1.77.1.5.1	-	✓
Ophthalmic Photography 16 Bit Image Storage	1.2.840.10008.5.1.4.1.1.77.1.5.2	-	✓
Ophthalmic Tomography Image Storage	1.2.840.10008.5.1.4.1.1.77.1.5.4	-	✓
Wide Field Ophthalmic Photography Stereographic Projection Image Storage	1.2.840.10008.5.1.4.1.1.77.1.5.5	-	✓
Wide Field Ophthalmic Photography 3D Coordinates Image Storage	1.2.840.10008.5.1.4.1.1.77.1.5.6	-	✓
VL Whole Slide Microscopy Image Storage	1.2.840.10008.5.1.4.1.1.77.1.6	-	✓
VL Multi-frame Image Storage - Trial (Retired)	1.2.840.10008.5.1.4.1.1.77.2	-	✓
Ophthalmic Thickness Map Storage	1.2.840.10008.5.1.4.1.1.81.1	-	✓
Corneal Topography Map Storage	1.2.840.10008.5.1.4.1.1.82.1	-	✓
Basic Text SR	1.2.840.10008.5.1.4.1.1.88.11	-	✓
X-Ray Radiation Dose SR Storage	1.2.840.10008.5.1.4.1.1.88.67	-	✓
Encapsulated PDF Storage	1.2.840.10008.5.1.4.1.1.104.1	-	✓
Positron Emission Tomography Image Storage	1.2.840.10008.5.1.4.1.1.128	-	✓
Legacy Converted Enhanced PET Image Storage	1.2.840.10008.5.1.4.1.1.128.1	-	✓
Enhanced PET Image Storage	1.2.840.10008.5.1.4.1.1.130	-	✓
RT Image Storage	1.2.840.10008.5.1.4.1.1.481.1	-	✓
RT Dose Storage	1.2.840.10008.5.1.4.1.1.481.2	-	✓
DICOS CT Image Storage	1.2.840.10008.5.1.4.1.1.501.1	-	✓
DICOS Digital X-Ray Image Storage - For Presentation	1.2.840.10008.5.1.4.1.1.501.2.1	-	✓
DICOS Digital X-Ray Image Storage - For Processing	1.2.840.10008.5.1.4.1.1.501.2.1	-	✓
Eddy Current Image Storage	1.2.840.10008.5.1.4.1.1.601.1	-	✓
Eddy Current Multi-frame Image Storage	1.2.840.10008.5.1.4.1.1.601.2	-	✓

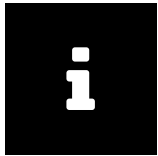
### 3.2.2 webrenderserver

The *webrenderserver* AE provides a WADO-RS interface for the retrieval of rendered and thumbnail resources, as defined in and implemented according to DICOM 2019e PS 3.18.



### 3.2.2.1 WADO-RS General Notes

A remote AE can request rendered and thumbnail representations of DICOM images (color and grayscale) stored in *syngo.share* on study, series, instance, and frame level. WADO-RS requests are syntactically checked and are required to contain valid authorization information by means of URL signatures (HMAC) before getting processed. DICOM data for the requested resource are queried and are loaded from *syngo.share*, rendered according to the specified options in the request, and sent to the remote AE as a single- or multipart HTTP response. The HTTP status code of the WADO-RS response informs the remote AE about the outcome of processing the WADO-RS request.



#### Note

The WADO-RS interface supports the retrieve transaction on rendered resources as well as on thumbnail resources. Further target resources (e.g. DICOM resources) are not supported. Furthermore, the retrieve capabilities transaction is not implemented due to security considerations (WADL disclosure).

### 3.2.2.2 WADO-RS Rendered Resources

The supported rendered resources along with their associated URI templates are listed in [Table 6](#).

**Table 6:** Rendered Resources

Resource	URI Template
Rendered Study	<code>/studies/{study}/rendered</code>
Rendered Series	<code>/studies/{study}/series/{series}/rendered</code>
Rendered Instance	<code>/studies/{study}/series/{series}/instances/{instance}/rendered</code>
Rendered Frames	<code>/studies/{study}/series/{series}/instances/{instance}/frames/{frames}/rendered</code>

The options and restrictions valid for all rendered resources are listed in [Table 7](#).

**Table 7:** Options and Restrictions on Rendered Resources

Options	Restrictions
Accept (Request Header Field)	Restricted to image/jpeg, image/gif, image/png, or wildcard representations covering the three rendered media types.
Accept-Charset (Request Header Field)	Not applied as the response payload consists of bitmap images only.
Accept (Query Parameter)	Restricted to image/jpeg, image/gif, or image/png.
Charset (Query Parameter)	Not applied as the response payload consists of bitmap images only.
Annotation (Query Parameter)	Restricted to patient and/or technique. Other keywords are ignored and listed in a warning header in the response. Localization of the burned-in annotations (e.g. regarding date format) is based on the Accept-Language header field.
Quality (Query Parameter)	Restricted to JPEG quality if image/jpeg is requested.
Viewport (Query Parameter)	Restricted to vw (viewport width) and vh (viewport height). Further parameter values are ignored. If viewport width and height are specified, the rendered images will be of the specified dimensions with black background color if padding is necessary.
Transfer Syntaxes Supported	Only DICOM instances of a supported transfer syntax are considered for rendering. For the list of supported transfer syntaxes, see <a href="#">Table 10</a> .

*Table 7: Options and Restrictions on Rendered Resources...*

Options	Restrictions
SOP Class Restrictions	Only DICOM instances of a supported SOP Class are considered for rendering. Rendering is restricted to SOP Classes for the purpose of image storage - e.g. the DICOM Image Pixel Module exists along with the DICOM Element PixelData (7FE0, 0010).
Size Restriction	There are no size limits imposed by the WADO-RS AE. However, depending on system resource and file format restrictions there might be limits to the size of each image.
Multi-Frame Image Handling	Each frame of a multi-frame image is rendered separately. Hence, each frame is returned as a part in case of a multi-part response. This is also the case if image/gif is the requested rendered media type.
Frames	The given frame numbers for rendered frames are expected to be in ascending order. If this is not the case, automatic sorting applies.

### 3.2.2.3 WADO-RS Thumbnail Resources

The supported thumbnail resources along with their associated URI templates are listed in [Table 8](#).

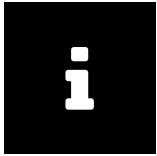
**Table 8:** Thumbnail Resources

Resource	URI Template
Study Thumbnail	/studies/{study}/thumbnail
Series Thumbnail	/studies/{study}/series/{series}/thumbnail
Instance Thumbnail	/studies/{study}/series/{series}/instances/{instance}/thumbnail
Frame Thumbnail	/studies/{study}/series/{series}/instances/{instance}/frames/{frames}/thumbnail

The options and restrictions valid for all thumbnail resources are listed in [Table 9](#).

**Table 9:** Options and Restrictions on Thumbnail Resources

Options	Restrictions
Accept (Request Header Field)	Restricted to image/jpeg, image/gif, image/png, or wildcard representations covering the three rendered media types.
Accept-Charset (Request Header Field)	Not applied as the response payload consists of a bitmap image only.
Accept (Query Parameter)	Restricted to image/jpeg, image/gif, or image/png.
Charset (Query Parameter)	Not applied as the response payload consists of a bitmap image only.
Viewport (Query Parameter)	If viewport width and height are specified, the rendered images will be of the specified dimensions with black background color if padding is necessary. Further parameter values are ignored.
Transfer Syntaxes Supported	The DICOM instance to render as a thumbnail is required to be of a supported transfer syntax. For the list of supported transfer syntaxes, see <a href="#">Table 10</a> .
SOP Class Restrictions	The DICOM instance to render as a thumbnail needs to be of a supported SOP Class. Rendering is restricted to SOP Classes for the purpose of image storage - e.g. the DICOM Image Pixel Module exists along with the DICOM Element PixelData (7FE0, 0010).
Size Restriction	There are no size limits imposed by the WADO-RS AE. However, depending on system resource and file format restrictions there might be limits to the size of each image.
Frames	The given frame numbers for rendered frames are expected to be in ascending order. If this is not the case, automatic sorting applies.

**Note**

The first frame of the first instance of the first series is used to render the thumbnail.

### 3.2.2.4 WADO-RS Supported Transfer Syntaxes

The supported Transfer Syntaxes for all rendered resources and thumbnail resources are listed in [Table 10](#).

**Table 10:** WADO-RS Supported Transfer Syntaxes

Transfer Syntax Name	UID
Implicit VR Little Endian: Default Transfer Syntax for DICOM	1.2.840.10008.1.2
Explicit VR Little Endian	1.2.840.10008.1.2.1
Deflated Explicit VR Little Endian	1.2.840.10008.1.2.1.99
Explicit VR Big Endian	1.2.840.10008.1.2.2
JPEG Baseline (Process 1): Default Transfer Syntax for Lossy JPEG 8-bit Image Compression	1.2.840.10008.1.2.4.50
JPEG Baseline (Processes 2 and 4): Default Transfer Syntax for Lossy JPEG 12-bit Image Compression (Process 4 only)	1.2.840.10008.1.2.4.51
JPEG Lossless, Nonhierarchical (Processes 14)	1.2.840.10008.1.2.4.57
JPEG Lossless, Nonhierarchical, First-Order Prediction (Processes 14 [Selection Value 1]): Default Transfer Syntax for Lossless JPEG Image Compression	1.2.840.10008.1.2.4.70
JPEG-LS Lossless Image Compression	1.2.840.10008.1.2.4.80
JPEG-LS Lossy (Near-Lossless) Image Compression	1.2.840.10008.1.2.4.81
JPEG 2000 Image Compression (Lossless Only)	1.2.840.10008.1.2.4.90
JPEG 2000 Image Compression	1.2.840.10008.1.2.4.91
RLE Lossless	1.2.840.10008.1.2.5

### 3.2.2.5 WADO-RS Connection Policies

#### General

All standard RS connection policies apply. There are no extensions for RS options.

#### WADO-RS Endpoint URL

`https://{host}/webrenderserver/rs/tenants/{tenant}`

Please replace {host} and {tenant} in the URL with the corresponding host and tenant name.

#### Security

To protect the WADO-RS interface from unauthorized access special attention is paid to security aspects. Only requests over HTTPS are accepted by the WADO-RS AE. On top, requests are required to contain valid authorization information by means of URL signatures (HMAC). Please note that the WADO-RS service is not enabled per default in the *webrenderserver*. For general information about configuration and URL signatures, please consult the *syngo.share* Interface and Integration Manual.

#### Number of Connections

The WADO-RS AE itself does not limit the number of simultaneous requests. However, in standard deployments the number of simultaneous HTTP connections might be limited by HAProxy.

## Synchronous and Asynchronous Requests

The WADO-RS AE only supports synchronous requests.

### Response Status

The response message header contains a HTTP status code indicating success or failure, as listed in [Table 11](#).

**Table 11:** WADO-RS HTTP Status Codes

Code	Name	Description
200	OK	The requested resource has been fetched successfully and is returned in the message body.
206	Partial Content	Indicates that for the requested resource (rendered resource) one or more DICOM instances are of a not supported SOP Class and are omitted in the response.
400	Bad Request	The request is malformed. Details are returned in the payload of the response.
403	Forbidden	The WADO-RS AE is refusing action as no or (only) an invalid authentication (URL signature) is present.
404	Not Found	The WADO-RS AE could not find the specified resource. This response status is also used to indicate that no applicable DICOM instance for thumbnail generation was found.
405	Method Not Allowed	Indicates a function parameter keyword other than linear is used in the window query parameter.
406	Not Acceptable	The remote AE did not provide any rendered media type in the accept header field and accept query parameter.
500	Internal Server Error	The WADO-RS AE encountered an error while processing the request.

### Warning Header

The response message header contains a HTTP Warning header field with the number of not rendered instances in case the response status is 206 (Partial Content). Furthermore, if unsupported annotation keywords are given in the request, the unsupported keywords are listed in the HTTP Warning header field.

## 3.3 *syngo.share* import

The *syngo.share* import FSR solely provides functionalities for handling DICOM media.

## 3.4 *syngo.share* core

*syngo.share* core is made up of multiple DICOM AEs. This chapter describes the conformance of those entities.

### 3.4.1 *webadmin*

The *webadmin* AE solely provides functionality for retrieving DICOM media.

### 3.4.2 *DicomServer*

#### 3.4.2.1 Supported SOP Classes and Transfer Syntaxes

The *DicomServer* AE provides standard conformance to the DICOM Storage SOP Classes listed in [Table 12](#). [Table 13](#) lists supported Private Storage SOP Classes. The corresponding Storage Transfer Syn-

taxes can be found in [Table 18](#).

**Table 12: Supported Storage SOP Classes**

SOP Class Name	SOP Class UID	SCP	SCU
Stored Print Storage	1.2.840.10008.5.1.1.1.27	✓	✓
Hardcopy Grayscale Image Storage	1.2.840.10008.5.1.1.1.29	✓	✓
Hardcopy Color Image Storage	1.2.840.10008.5.1.1.1.30	✓	✓
Computed Radiography Image Storage	1.2.840.10008.5.1.4.1.1.1	✓	✓
Digital X-Ray Image Storage - For Presentation	1.2.840.10008.5.1.4.1.1.1.1	✓	✓
Digital X-Ray Image Storage - For Processing	1.2.840.10008.5.1.4.1.1.1.1.1	✓	✓
Digital Mammography X-Ray Image Storage - For Presentation	1.2.840.10008.5.1.4.1.1.1.2	✓	✓
Digital Mammography X-Ray Image Storage - For Processing	1.2.840.10008.5.1.4.1.1.1.2.1	✓	✓
Digital Intra-Oral X-Ray Image Storage - For Presentation	1.2.840.10008.5.1.4.1.1.1.3	✓	✓
Digital Intra-Oral X-Ray Image Storage - For Processing	1.2.840.10008.5.1.4.1.1.1.3.1	✓	✓
CT Image Storage	1.2.840.10008.5.1.4.1.1.2	✓	✓
Enhanced CT Image Storage	1.2.840.10008.5.1.4.1.1.2.1	✓	✓
Legacy Converted Enhanced CT Image Storage	1.2.840.10008.5.1.4.1.1.2.2	✓	✓
Ultrasound Multi-frame Image Storage (Retired)	1.2.840.10008.5.1.4.1.1.3	✓	✓
Ultrasound Multi-frame Image Storage	1.2.840.10008.5.1.4.1.1.3.1	✓	✓
MR Image Storage	1.2.840.10008.5.1.4.1.1.4	✓	✓
Enhanced MR Image Storage	1.2.840.10008.5.1.4.1.1.4.1	✓	✓
MR Spectroscopy Storage	1.2.840.10008.5.1.4.1.1.4.2	✓	✓
Enhanced MR Color Image Storage	1.2.840.10008.5.1.4.1.1.4.3	✓	✓
Legacy Converted Enhanced MR Image Storage	1.2.840.10008.5.1.4.1.1.4.4	✓	✓
Nuclear Medicine Image Storage (Retired)	1.2.840.10008.5.1.4.1.1.5	✓	✓
Ultrasound Image Storage (Retired)	1.2.840.10008.5.1.4.1.1.6	✓	✓
Ultrasound Image Storage	1.2.840.10008.5.1.4.1.1.6.1	✓	✓
Enhanced US Volume Storage	1.2.840.10008.5.1.4.1.1.6.2	✓	✓
Secondary Capture Image Storage	1.2.840.10008.5.1.4.1.1.7	✓	✓
Multi-frame Single Bit Secondary Capture Image Storage	1.2.840.10008.5.1.4.1.1.7.1	✓	✓
Multi-frame Grayscale Byte Secondary Capture Image Storage	1.2.840.10008.5.1.4.1.1.7.2	✓	✓
Multi-frame Grayscale Word Secondary Capture Image Storage	1.2.840.10008.5.1.4.1.1.7.3	✓	✓
Multi-frame True Color Secondary Capture Image Storage	1.2.840.10008.5.1.4.1.1.7.4	✓	✓
Standalone Overlay Storage	1.2.840.10008.5.1.4.1.1.8	✓	✓
Standalone Curve Storage	1.2.840.10008.5.1.4.1.1.9	✓	✓
Waveform Storage - Trial (Retired)	1.2.840.10008.5.1.4.1.1.9.1	✓	✓
12-lead ECG Waveform Storage	1.2.840.10008.5.1.4.1.1.9.1.1	✓	✓
General ECG Waveform Storage	1.2.840.10008.5.1.4.1.1.9.1.2	✓	✓
Ambulatory ECG Waveform Storage	1.2.840.10008.5.1.4.1.1.9.1.3	✓	✓
Hemodynamic Waveform Storage	1.2.840.10008.5.1.4.1.1.9.2.1	✓	✓
Cardiac Electrophysiology Waveform Storage	1.2.840.10008.5.1.4.1.1.9.3.1	✓	✓
Basic Voice Audio Waveform Storage	1.2.840.10008.5.1.4.1.1.9.4.1	✓	✓
General Audio Waveform Storage	1.2.840.10008.5.1.4.1.1.9.4.2	✓	✓
Arterial Pulse Waveform Storage	1.2.840.10008.5.1.4.1.1.9.5.1	✓	✓
Respiratory Waveform Storage	1.2.840.10008.5.1.4.1.1.9.6.1	✓	✓
Multi-channel Respiratory Waveform Storage	1.2.840.10008.5.1.4.1.1.9.6.2	✓	✓

Table 12: Supported Storage SOP Classes...

... Table 12: Supported Storage SOP Classes

SOP Class Name	SOP Class UID	SCP	SCU
Routine Scalp Electroencephalogram Waveform Storage	1.2.840.10008.5.1.4.1.1.9.7.1	✓	✓
Electromyogram Waveform Storage	1.2.840.10008.5.1.4.1.1.9.7.2	✓	✓
Electrooculogram Waveform Storage	1.2.840.10008.5.1.4.1.1.9.7.3	✓	✓
Sleep Electroencephalogram Waveform Storage	1.2.840.10008.5.1.4.1.1.9.7.4	✓	✓
Body Position Waveform Storage	1.2.840.10008.5.1.4.1.1.9.8.1	✓	✓
Standalone Modality LUT Storage	1.2.840.10008.5.1.4.1.1.10	✓	✓
Standalone VOILUT Storage	1.2.840.10008.5.1.4.1.1.11	✓	✓
Grayscale Softcopy Presentation State Storage	1.2.840.10008.5.1.4.1.1.11.1	✓	✓
Color Softcopy Presentation State Storage	1.2.840.10008.5.1.4.1.1.11.2	✓	✓
Pseudo-Color Softcopy Presentation State Storage	1.2.840.10008.5.1.4.1.1.11.3	✓	✓
Blending Softcopy Presentation State Storage	1.2.840.10008.5.1.4.1.1.11.4	✓	✓
XA/XRF Grayscale Softcopy Presentation State Storage	1.2.840.10008.5.1.4.1.1.11.5	✓	✓
Grayscale Planar MPR Volumetric Presentation State Storage	1.2.840.10008.5.1.4.1.1.11.6	✓	✓
Compositing Planar MPR Volumetric Presentation State Storage	1.2.840.10008.5.1.4.1.1.11.7	✓	✓
Advanced Blending Presentation State Storage	1.2.840.10008.5.1.4.1.1.11.8	✓	✓
Volume Rendering Volumetric Presentation State Storage	1.2.840.10008.5.1.4.1.1.11.9	✓	✓
Segmented Volume Rendering Volumetric Presentation State Storage	1.2.840.10008.5.1.4.1.1.11.10	✓	✓
Multiple Volume Rendering Volumetric Presentation State Storage	1.2.840.10008.5.1.4.1.1.11.11	✓	✓
X-Ray Angiographic Image Storage	1.2.840.10008.5.1.4.1.1.12.1	✓	✓
Enhanced XA Image Storage	1.2.840.10008.5.1.4.1.1.12.1.1	✓	✓
X-Ray Radiofluoroscopic Image Storage	1.2.840.10008.5.1.4.1.1.12.2	✓	✓
Enhanced XRF Image Storage	1.2.840.10008.5.1.4.1.1.12.2.1	✓	✓
X-Ray Angiographic Bi-Plane Image Storage (Retired)	1.2.840.10008.5.1.4.1.1.12.3	✓	✓
X-Ray 3D Angiographic Image Storage	1.2.840.10008.5.1.4.1.1.13.1.1	✓	✓
X-Ray 3D Craniofacial Image Storage	1.2.840.10008.5.1.4.1.1.13.1.2	✓	✓
Breast Tomosynthesis Image Storage	1.2.840.10008.5.1.4.1.1.13.1.3	✓	✓
Breast Projection X-Ray Image Storage - For Presentation	1.2.840.10008.5.1.4.1.1.13.1.4	✓	✓
Breast Projection X-Ray Image Storage - For Processing	1.2.840.10008.5.1.4.1.1.13.1.5	✓	✓
Intravascular Optical Coherence Tomography Image Storage - For Presentation	1.2.840.10008.5.1.4.1.1.14.1	✓	✓
Intravascular Optical Coherence Tomography Image Storage - For Processing	1.2.840.10008.5.1.4.1.1.14.2	✓	✓
Nuclear Medicine Image Storage	1.2.840.10008.5.1.4.1.1.20	✓	✓
Parametric Map Storage	1.2.840.10008.5.1.4.1.1.30	✓	✓
Raw Data Storage	1.2.840.10008.5.1.4.1.1.66	✓	✓
Spatial Registration Storage	1.2.840.10008.5.1.4.1.1.66.1	✓	✓
Spatial Fiducials Storage	1.2.840.10008.5.1.4.1.1.66.2	✓	✓
Deformable Spatial Registration Storage	1.2.840.10008.5.1.4.1.1.66.3	✓	✓
Segmentation Storage	1.2.840.10008.5.1.4.1.1.66.4	✓	✓
Surface Segmentation Storage	1.2.840.10008.5.1.4.1.1.66.5	✓	✓
Tractography Results Storage	1.2.840.10008.5.1.4.1.1.66.6	✓	✓
Real World Value Mapping Storage	1.2.840.10008.5.1.4.1.1.67	✓	✓
Surface Scan Mesh Storage	1.2.840.10008.5.1.4.1.1.68.1	✓	✓
Surface Scan Point Cloud Storage	1.2.840.10008.5.1.4.1.1.68.2	✓	✓
VL Image Storage (Retired)	1.2.840.10008.5.1.4.1.1.77.1	✓	✓

Table 12: Supported Storage SOP Classes...

... Table 12: Supported Storage SOP Classes

SOP Class Name	SOP Class UID	SCP	SCU
VL Endoscopic Image Storage	1.2.840.10008.5.1.4.1.1.77.1.1	✓	✓
Video Endoscopic Image Storage	1.2.840.10008.5.1.4.1.1.77.1.1.1	✓	✓
VL Microscopic Image Storage	1.2.840.10008.5.1.4.1.1.77.1.2	✓	✓
Video Microscopic Image Storage	1.2.840.10008.5.1.4.1.1.77.1.2.1	✓	✓
VL Slide-Coordinates Microscopic Image Storage	1.2.840.10008.5.1.4.1.1.77.1.3	✓	✓
VL Photographic Image Storage	1.2.840.10008.5.1.4.1.1.77.1.4	✓	✓
Video Photographic Image Storage	1.2.840.10008.5.1.4.1.1.77.1.4.1	✓	✓
Ophthalmic Photography 8 Bit Image Storage	1.2.840.10008.5.1.4.1.1.77.1.5.1	✓	✓
Ophthalmic Photography 16 Bit Image Storage	1.2.840.10008.5.1.4.1.1.77.1.5.2	✓	✓
Stereometric Relationship Storage	1.2.840.10008.5.1.4.1.1.77.1.5.3	✓	✓
Ophthalmic Tomography Image Storage	1.2.840.10008.5.1.4.1.1.77.1.5.4	✓	✓
Wide Field Ophthalmic Photography Stereographic Projection Image Storage	1.2.840.10008.5.1.4.1.1.77.1.5.5	✓	✓
Wide Field Ophthalmic Photography 3D Coordinates Image Storage	1.2.840.10008.5.1.4.1.1.77.1.5.6	✓	✓
Ophthalmic Optical Coherence Tomography En Face Image Storage	1.2.840.10008.5.1.4.1.1.77.1.5.7	✓	✓
Ophthalmic Optical Coherence Tomography B-scan Volume Analysis Storage	1.2.840.10008.5.1.4.1.1.77.1.5.8	✓	✓
VL Whole Slide Microscopy Image Storage	1.2.840.10008.5.1.4.1.1.77.1.6	✓	✓
Dermoscopic Photography Image Storage	1.2.840.10008.5.1.4.1.1.77.1.7	✓	✓
VL Multi-frame Image Storage - Trial (Retired)	1.2.840.10008.5.1.4.1.1.77.2	✓	✓
Lensometry Measurements Storage	1.2.840.10008.5.1.4.1.1.78.1	✓	✓
Autorefractometry Measurements Storage	1.2.840.10008.5.1.4.1.1.78.2	✓	✓
Keratometry Measurements Storage	1.2.840.10008.5.1.4.1.1.78.3	✓	✓
Subjective Refraction Measurements Storage	1.2.840.10008.5.1.4.1.1.78.4	✓	✓
Visual Acuity Storage Measurements Storage	1.2.840.10008.5.1.4.1.1.78.5	✓	✓
Spectacle Prescription Report Storage	1.2.840.10008.5.1.4.1.1.78.6	✓	✓
Ophthalmic Axial Measurements Storage	1.2.840.10008.5.1.4.1.1.78.7	✓	✓
Intraocular Lens Calculations Storage	1.2.840.10008.5.1.4.1.1.78.8	✓	✓
Macular Grid Thickness and Volume Report	1.2.840.10008.5.1.4.1.1.79.1	✓	✓
Ophthalmic Visual Field Static Perimetry Measurements Storage	1.2.840.10008.5.1.4.1.1.80.1	✓	✓
Ophthalmic Thickness Map Storage	1.2.840.10008.5.1.4.1.1.81.1	✓	✓
Corneal Topography Map Storage	1.2.840.10008.5.1.4.1.1.82.1	✓	✓
Text SR Storage - Trial (Retired)	1.2.840.10008.5.1.4.1.1.88.1	✓	✓
Audio SR Storage - Trial (Retired)	1.2.840.10008.5.1.4.1.1.88.2	✓	✓
Detail SR Storage - Trial (Retired)	1.2.840.10008.5.1.4.1.1.88.3	✓	✓
Comprehensive SR Storage - Trial (Retired)	1.2.840.10008.5.1.4.1.1.88.4	✓	✓
Basic Text SR Storage	1.2.840.10008.5.1.4.1.1.88.11	✓	✓
Enhanced SR Storage	1.2.840.10008.5.1.4.1.1.88.22	✓	✓
Comprehensive SR Storage	1.2.840.10008.5.1.4.1.1.88.33	✓	✓
Comprehensive 3D SR Storage	1.2.840.10008.5.1.4.1.1.88.34	✓	✓
Extensible SR Storage	1.2.840.10008.5.1.4.1.1.88.35	✓	✓
Procedure Log Storage	1.2.840.10008.5.1.4.1.1.88.40	✓	✓
Mammography CAD SR Storage	1.2.840.10008.5.1.4.1.1.88.50	✓	✓
Key Object Selection Document Storage	1.2.840.10008.5.1.4.1.1.88.59	✓	✓
Chest CAD SR Storage	1.2.840.10008.5.1.4.1.1.88.65	✓	✓

Table 12: Supported Storage SOP Classes...

... Table 12: Supported Storage SOP Classes

SOP Class Name	SOP Class UID	SCP	SCU
X-Ray Radiation Dose SR Storage	1.2.840.10008.5.1.4.1.1.88.67	✓	✓
Radiopharmaceutical Radiation Dose SR Storage	1.2.840.10008.5.1.4.1.1.88.68	✓	✓
Colon CAD SR Storage	1.2.840.10008.5.1.4.1.1.88.69	✓	✓
Implantation Plan SR Document Storage	1.2.840.10008.5.1.4.1.1.88.70	✓	✓
Acquisition Context SR Storage	1.2.840.10008.5.1.4.1.1.88.71	✓	✓
Simplified Adult Echo SR Storage	1.2.840.10008.5.1.4.1.1.88.72	✓	✓
Patient Radiation Dose SR Storage	1.2.840.10008.5.1.4.1.1.88.73	✓	✓
Planned Imaging Agent Administration SR Storage	1.2.840.10008.5.1.4.1.1.88.74	✓	✓
Performed Imaging Agent Administration SR Storage	1.2.840.10008.5.1.4.1.1.88.75	✓	✓
Content Assessment Results Storage	1.2.840.10008.5.1.4.1.1.90.1	✓	✓
Encapsulated PDF Storage	1.2.840.10008.5.1.4.1.1.104.1	✓	✓
Encapsulated CDA Storage	1.2.840.10008.5.1.4.1.1.104.2	✓	✓
Encapsulated STL Storage	1.2.840.10008.5.1.4.1.1.104.3	✓	✓
Encapsulated OBJ Storage	1.2.840.10008.5.1.4.1.1.104.4	✓	✓
Encapsulated MTL Storage	1.2.840.10008.5.1.4.1.1.104.5	✓	✓
Positron Emission Tomography Image Storage	1.2.840.10008.5.1.4.1.1.128	✓	✓
Legacy Converted Enhanced PET Image Storage	1.2.840.10008.5.1.4.1.1.128.1	✓	✓
PET Curve Storage	1.2.840.10008.5.1.4.1.1.129	✓	✓
Enhanced PET Image Storage	1.2.840.10008.5.1.4.1.1.130	✓	✓
Basic Structured Display Storage	1.2.840.10008.5.1.4.1.1.131	✓	✓
CT Performed Procedure Protocol Storage	1.2.840.10008.5.1.4.1.1.200.2	✓	✓
RT Image Storage	1.2.840.10008.5.1.4.1.1.481.1	✓	✓
RT Dose Storage	1.2.840.10008.5.1.4.1.1.481.2	✓	✓
RT Structure Set Storage	1.2.840.10008.5.1.4.1.1.481.3	✓	✓
RT Beams Treatment Record Storage	1.2.840.10008.5.1.4.1.1.481.4	✓	✓
RT Plan Storage	1.2.840.10008.5.1.4.1.1.481.5	✓	✓
RT Brachy Treatment Record Storage	1.2.840.10008.5.1.4.1.1.481.6	✓	✓
RT Treatment Summary Record Storage	1.2.840.10008.5.1.4.1.1.481.7	✓	✓
RT Ion Plan Storage	1.2.840.10008.5.1.4.1.1.481.8	✓	✓
RT Ion Beams Treatment Record Storage	1.2.840.10008.5.1.4.1.1.481.9	✓	✓
RT Physician Intent Storage	1.2.840.10008.5.1.4.1.1.481.10	✓	✓
RT Segment Annotation Storage	1.2.840.10008.5.1.4.1.1.481.11	✓	✓
RT Radiation Set Storage	1.2.840.10008.5.1.4.1.1.481.12	✓	✓
C-Arm Photon-Electron Radiation Storage	1.2.840.10008.5.1.4.1.1.481.13	✓	✓
Tomotherapeutic Radiation Storage	1.2.840.10008.5.1.4.1.1.481.14	✓	✓
Robotic-Arm Radiation Storage	1.2.840.10008.5.1.4.1.1.481.15	✓	✓
RT Radiation Record Set Storage	1.2.840.10008.5.1.4.1.1.481.16	✓	✓
RT Radiation Salvage Record Storage	1.2.840.10008.5.1.4.1.1.481.17	✓	✓
Tomotherapeutic Radiation Record Storage	1.2.840.10008.5.1.4.1.1.481.18	✓	✓
C-Arm Photon-Electron Radiation Record Storage	1.2.840.10008.5.1.4.1.1.481.19	✓	✓
Robotic Radiation Record Storage	1.2.840.10008.5.1.4.1.1.481.20	✓	✓
DICOS CT Image Storage	1.2.840.10008.5.1.4.1.1.501.1	✓	✓
DICOS Digital X-Ray Image Storage - For Presentation	1.2.840.10008.5.1.4.1.1.501.2.1	✓	✓
DICOS Digital X-Ray Image Storage - For Processing	1.2.840.10008.5.1.4.1.1.501.2.2	✓	✓

Table 12: Supported Storage SOP Classes...



... Table 12: Supported Storage SOP Classes

SOP Class Name	SOP Class UID	SCP	SCU
DICOS Threat Detection Report Storage	1.2.840.10008.5.1.4.1.1.501.3	✓	✓
DICOS 2D AIT Storage	1.2.840.10008.5.1.4.1.1.501.4	✓	✓
DICOS 3D AIT Storage	1.2.840.10008.5.1.4.1.1.501.5	✓	✓
DICOS Quadrupole Resonance Storage	1.2.840.10008.5.1.4.1.1.501.6	✓	✓
Eddy Current Image Storage	1.2.840.10008.5.1.4.1.1.601.1	✓	✓
Eddy Current Multi-frame Image Storage	1.2.840.10008.5.1.4.1.1.601.2	✓	✓
RT Beams Delivery Instruction Storage - Trial (Retired)	1.2.840.10008.5.1.4.34.1	✓	✓
RT Beams Delivery Instruction Storage	1.2.840.10008.5.1.4.34.7	✓	✓
RT Brachy Application Setup Delivery Instruction Storage	1.2.840.10008.5.1.4.34.10	✓	✓

**Table 13: Supported Private Storage SOP Classes**

SOP Class Name	SOP Class UID	SCP	SCU
Agfa Basic Attribute Presentation State Storage	1.2.124.113532.3500.7	✓	✓
GE Private 3D Model Storage	1.2.840.113619.4.26	✓	✓
GE Private PET Raw Data Storage	1.2.840.113619.4.30	✓	✓
Siemens CSA Non-Image Storage	1.3.12.2.1107.5.9.1	✓	✓
Siemens CT MR Volume Storage	1.3.12.2.1107.5.99.3.10	✓	✓
Siemens AX Frame Sets Storage	1.3.12.2.1107.5.99.3.11	✓	✓
Philips Private 3D Presentation State Storage	1.3.46.670589.2.5.1.1	✓	✓
Philips Private Perfusion Storage	1.3.46.670589.5.0.13	✓	✓
Philips Private Perfusion Analysis Storage	1.3.46.670589.5.0.14	✓	✓
Philips Private MR Spectrum Storage	1.3.46.670589.11.0.0.12.1	✓	✓
Philips Private MR Series Data Storage	1.3.46.670589.11.0.0.12.2	✓	✓
Philips Private MR Examcard Data Storage	1.3.46.670589.11.0.0.12.4	✓	✓

**Table 14: Supported Query/Retrieve SOP Classes**

SOP Class Name	SOP Class UID	SCP	SCU
Patient Root Query/Retrieve Information Model – FIND	1.2.840.10008.5.1.4.1.2.1.1	✓	✓
Patient Root Query/Retrieve Information Model – MOVE	1.2.840.10008.5.1.4.1.2.1.2	✓	✓
Patient Root Query/Retrieve Information Model – GET	1.2.840.10008.5.1.4.1.2.1.3	✓	-
Study Root Query/Retrieve Information Model – FIND	1.2.840.10008.5.1.4.1.2.2.1	✓	✓
Study Root Query/Retrieve Information Model – MOVE	1.2.840.10008.5.1.4.1.2.2.2	✓	✓
Study Root Query/Retrieve Information Model – GET	1.2.840.10008.5.1.4.1.2.2.3	✓	-
Modality Worklist Information Model – FIND	1.2.840.10008.5.1.4.31	✓	-

**Table 15: Supported Verification SOP Classes**

SOP Class Name	SOP Class UID	SCP	SCU
Verification	1.2.840.10008.1.1	✓	-

**Table 16:** Supported Storage Commitment SOP Classes

SOP Class Name	SOP Class UID	SCP	SCU
Storage Commitment Push Model	1.2.840.10008.1.20.1	✓	-

**Table 17:** Supported Modality Performed Procedure Step SOP Classes

SOP Class Name	SOP Class UID	SCP	SCU
Modality Performed Procedure Step	1.2.840.10008.3.1.2.3.3	✓	✓

For all non-C-STORE SOP Classes, only the “Implicit VR Little Endian: Default Transfer Syntax for DICOM” (1.2.840.10008.1.2) is supported.

The following C-STORE SCU/SCP transfer syntaxes are supported:

**Table 18:** Supported Storage Transfer Syntaxes

Transfer Syntax Name	UID
Implicit VR Little Endian: Default Transfer Syntax for DICOM	1.2.840.10008.1.2
Explicit VR Little Endian	1.2.840.10008.1.2.1
Deflated Explicit VR Little Endian	1.2.840.10008.1.2.1.99
Explicit VR Big Endian	1.2.840.10008.1.2.2
MPEG2 Main Profile / Main Level	1.2.840.10008.1.2.4.100
MPEG2 Main Profile / High Level	1.2.840.10008.1.2.4.101
MPEG-4 AVC/H.264 High Profile / Level 4.1	1.2.840.10008.1.2.4.102
MPEG-4 AVC/H.264 BD-compatible High Profile / Level 4.1	1.2.840.10008.1.2.4.103
MPEG-4 AVC/H.264 High Profile / Level 4.2 for 2D Image Compression	1.2.840.10008.1.2.4.104
MPEG-4 AVC/H.264 High Profile / Level 4.2 for 3D Image Compression	1.2.840.10008.1.2.4.105
MPEG-4 AVC/H.264 Stereo High Profile / Level 4.2	1.2.840.10008.1.2.4.106
HEVC/H.265 Main Profile / Level 5.1	1.2.840.10008.1.2.4.107
HEVC/H.265 Main 10 Profile / Level 5.1	1.2.840.10008.1.2.4.108
JPEG Baseline (Process 1): Default Transfer Syntax for Lossy JPEG 8 Bit Image Compression	1.2.840.10008.1.2.4.50
JPEG Extended (Process 2 and 4): Default Transfer Syntax for Lossy JPEG 12 Bit Image Compression (Process 4 only)	1.2.840.10008.1.2.4.51
JPEG Lossless, Non-Hierarchical (Process 14)	1.2.840.10008.1.2.4.57
JPEG Lossless, Non-Hierarchical, First-Order Prediction (Process 14 [Selection Value 1]): Default Transfer Syntax for Lossless JPEG Image Compression	1.2.840.10008.1.2.4.70
JPEG-LS Lossless Image Compression	1.2.840.10008.1.2.4.80
JPEG-LS Lossy (Near-Lossless) Image Compression	1.2.840.10008.1.2.4.81
JPEG 2000 Image Compression (Lossless Only)	1.2.840.10008.1.2.4.90
JPEG 2000 Image Compression	1.2.840.10008.1.2.4.91
JPEG 2000 Part 2 Multi-component Image Compression (Lossless Only)	1.2.840.10008.1.2.4.92
JPEG 2000 Part 2 Multi-component Image Compression	1.2.840.10008.1.2.4.93
RLE Lossless	1.2.840.10008.1.2.5

### 3.4.2.2 Association Establishment Policies

#### General

The *DicomServer* AE supports plain TCP and TLS-encrypted communication. For each kind of transport, the server provides an arbitrary number of listen ports. All these ports are equivalent and provide the same services. The maximum accepted PDU size is 16384.

#### Number of Associations

The *DicomServer* AE starts a thread for each incoming association request. The number of simultaneous associations is thus only limited by the hardware resources. The *DicomServer* AE is configured for 30 simultaneous connections by default. This value can be changed without restarting the process.

#### Asynchronous Nature

The *DicomServer* AE only allows a single outstanding operation on an association, meaning that it does not perform asynchronous negotiation.

#### Implementation-Identifying Information

##### Implementation Class UID

1.2.276.0.7230010.3.0.3.6.1

##### Implementation Version Name

OFFIS\_DCMTK\_361

#### Extended Negotiation

The *DicomServer* AE supports extended negotiation for C-FIND according to DICOM 2013 PS 3.4, C.5.1.1 for Patient Root Query/Retrieve and Study Root Query/Retrieve. The flags "Relational-queries" (Byte 1) and "Date-time matching" (Byte 2) are supported. "Fuzzy semantic matching of person names" (Byte 3) and "Timezone Query Adjustment" (Byte 4) are not supported and therefore always turned down by the SCP during association negotiation.

The *DicomServer* AE supports extended negotiation for C-MOVE and C-GET for Patient Root Query/Retrieve and Study Root Query/Retrieve in accordance with DICOM 2013 PS 3.4, C.5.2.1 and DICOM 2013 PS 3.4, C.5.3.1. "Relational-retrieval" (Byte 1) is supported.

### 3.4.2.3 Association Initiation Policy by Real-World Activity

#### Real-World Activity: C-MOVE Request

##### Associated Real-World Activity

The *DicomServer* AE initiates an association when it receives a C-MOVE request.

##### Proposed Presentation Contexts

The *DicomServer* AE picks all required SOP Classes from [Table 12](#) and [Table 13](#) and combines them with all Transfer Syntaxes from [Table 18](#).

#### Real-World Activity: C-FIND Spanning

##### Associated Real-World Activity

The *DicomServer* AE initiates associations to an arbitrary number of configured targets and forwards the incoming C-FIND request unaltered to each of them. The C-FIND request is also processed locally. Results that share common identifiers (i.e. that share a common 4-tuple consisting of the Patient ID, Study Instance UID, Series Instance UID and SOP Instance UID) are eliminated. Local results are always returned before any remote results are taken into account.

### Proposed Presentation Contexts

The presentation context used for the incoming C-FIND request is also used for the outgoing association.

#### Real-World Activity: C-MOVE Spanning

##### Associated Real-World Activity

The *DicomServer* AE receives a C-MOVE request, and the Called AET used in the incoming association matches the name of a configured DICOM target. In this case, the C-MOVE request is forwarded unaltered to the corresponding configured targets.

### Proposed Presentation Contexts

The presentation context used for the incoming C-MOVE request is also used for the outgoing association.

#### 3.4.2.4 Association Acceptance Policies

The *DicomServer* AE accepts an association when it receives a valid association request with at least one matching presentation context.

#### Real-World Activity: Storage SCU

##### Associated Real-World Activity

The associated real-world activity is a modality, workstation, PACS or other system attempting to store an image to the *DicomServer* AE. This results in the storage of the received images in *syngo.share*.

### Proposed Presentation Contexts

Table 12, Table 13 and Table 18 list the presentation contexts that the *DicomServer* AE accepts from remote DICOM Storage SCUs during a C-STORE request.

### Presentation Context Acceptance Criteria

The *DicomServer* AE accepts any of the presentation contexts that are constituted by the content of the Table 12, Table 13 and Table 18.

### KOS Rejection Notes

On DICOM import, KOS Rejection Notes are recognized by *syngo.share* (*DicomServer*) and cause each SOP Instance referenced by this KOS object to be iteratively soft-deleted from *syngo.share*.

The Tag Concept Name Code Sequence in the KOS Rejection Note must contain exactly following information:

- CodingSchemeDesignator = "DCM"
- CodeValue = 113001, 113037, 113038 or 113039
- CodeMeaning = "Rejected for Quality Reasons", "Rejected for Patient Safety Reasons", "Incorrect Modality Worklist Entry" or "Data Retention Policy Expired"

The Current Requested Procedure Evidence Sequence contained in the KOS object may contain 1 to N studies and refers to all SOP Instances which are to be soft-deleted. It is not possible to delete Study Instance UIDs without having the whole hierarchy down to the Referenced SOP Sequence. The DICOM standard defines this hierarchy in DICOM 2013 PS 3.3 C.17.2.1.

The Referenced SOP Class UID has to match the SOP Class UID of the target instance. If referenced objects cannot be found or the SOP Class UIDs do not match, the KOS Rejection Note is imported, a warning is logged and the respective SOP Instances is not soft-deleted.

SOP Instance UIDs which have been deleted for one of the following reasons – “Rejected for Quality Reasons”, “Rejected for Patient Safety Reasons” or “Incorrect Modality Worklist Entry” – can be barred from being reimported.

### 3.4.2.5 Asynchronous DICOM Import

The *syngo.share* core DICOM import is usually performed in synchronous mode, i.e. the actual import is part of a C-STORE request and a response is sent afterwards. In order to increase the import rate observed by the sending modality, *syngo.share* also offers an advanced asynchronous DICOM import mode which consists of two steps. To save time, only a few checks are initially performed on the received data; the images are then temporarily stored (i.e. not yet imported into the archive).

These images are added to an import queue residing in the database. At this point (step 1), the C-STORE request is finished, meaning that a response with success status is sent to inform the modality that *syngo.share* is ready for another request. In a second, independent step (step 2), the import queue is processed and the data is actually imported into the archive, thus completing the asynchronous DICOM import.

The entries in the import queue are processed in the order of their reception. Their processing is no different from synchronous imports. A safeguard is in place to ensure that simultaneous threads do not conflict with one another: Any actively processed SOP Instance UIDs or SOP Instance UIDs referenced by KOS objects are marked as “in process” and therefore reserved. No other import thread within a *Dicom-Server* may simultaneously process the same SOP Instance UIDs.

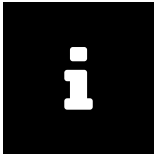
The asynchronous DICOM import may help to more efficiently utilize modalities since it may allow subsequent examinations to be started sooner. This is especially useful in times of high load. Because the actual import rate is generally less than the externally observed import rate, this functionality is not meant to be used for importing large volumes of data in bulk, e.g. a data migration. When the intermediate storage runs low on disk space, the C-STORE requests are delayed until there is enough free disk space available or until they have timed out. This gradually happens after images have been archived and removed from the intermediate storage. This intermediate storage requires a dedicated hard disk partition. Only then can the mechanism prevent an exhaustion of the disk space, which would in turn lead to an error when trying to store an image.

When using both synchronous and asynchronous imports within a system, asynchronously imported images are not necessarily processed before a subsequent synchronous import. This is due to the inherent delay of asynchronous imports, described in Step 2.

Other important points to consider when deciding whether to use synchronous or asynchronous imports in a system are:

#### ■ Error Notification

Unlike synchronous imports, asynchronous imports do not actively notify the user of an error during import, meaning errors cannot be dealt with immediately. This is because potential erroneous images in Step 2 are part of an automated process which does not entail active user notification. Therefore, the erroneous images are added to a DICOM blacklist which must be manually cleaned by an administrator. This list can be managed via *DicomAdmin*.

**Note**

The blacklist is not persistent; it is kept in memory per *DicomServer* instance, i.e. a restart of the *DicomServer* clears the blacklist entries. A new blacklist is created when the DICOM images are reprocessed. Each *DicomServer* independently manages its own blacklist.

### Response Behavior

During asynchronous import, *syngo.share* answers any DICOM storage commitment requests sent by modalities in the negative if the images have yet to be processed. A positive response is only sent when the queued data has been archived. Some modalities are not able to send further storage commitment requests after a given period and simply resend images.

### Image Availability

Any queued images in Step 2 are unavailable to C-FIND and C-MOVE requests because they have not yet been added to the archive.

For these reasons, the synchronous import mode is preferred over asynchronous import mode when importing a large volume of data or when dealing with modalities with limited capabilities.

## 3.4.3 EventServer

### 3.4.3.1 Supported SOP Classes

The *EventServer* AE provides standard-conformant support of the SOP Classes mentioned in [Table 19](#).

**Table 19:** Supported Instance Availability Notification SOP Classes

SOP Class Name	SOP Class UID	SCP	SCU
Instance Availability Notification	1.2.840.10008.5.1.4.33	-	✓

### 3.4.3.2 Association Establishment Policies

#### General

The *EventServer* AE supports TCP/IP. When a DICOM IAN has to be sent, the *EventServer* AE attempts to establish an association with a remote AE. The host, port and remote AET are defined in the configuration dialog.

#### Number of Associations

The *EventServer* AE starts a thread for each configured receiving AE (an AE can be configured twice). The number of simultaneous associations is thus only limited by the hardware resources.

#### Asynchronous Nature

The *EventServer* AE only allows a single outstanding operation on each association. It does not perform asynchronous negotiation.

#### Implementation Identifying Information

##### Implementation Class UID

1.2.276.0.7230010.3.0.3.6.1

##### Implementation Version Name

OFFIS\_DCMTK\_361

### **Association Initiation Policy by Real-World Activity**

The *EventServer* AE initiates an association with a remote AE for N-CREATE requests. By default, the DICOM Implicit VR Little Endian Transfer Syntax (1.2.840.10008.1.2) is used, as defined in DICOM 2013 PS 3.5, 10.1.

# 4 DICOM Media AE Specification

This chapter describes the DICOM media functionalities of the *syngo.share* view, *syngo.share* import, and *webadmin* AEs.

## 4.1 Implementation Model

### 4.1.1 Application Data Flow Diagram

See [Section 2.1.1](#) (*syngo.share* view Data Flow Diagram), [Section 2.1.2](#) (*syngo.share* import Data Flow Diagram) and [Section 2.1.3](#) (*webadmin* Data Flow Diagram).

### 4.1.2 Functional Definitions of AEs

The *syngo.share* view and *syngo.share* import AEs implement standard DICOM-conformant Service Classes for the creation and reading of DICOM file sets (according to DICOM 2013 PS 3.10). At least, General Purpose CD-R Interchange Profiles are supported.

The *webadmin* AE implements a standard DICOM-conformant Service Class for retrieving DICOM images over WADO-URI.

### 4.1.3 Sequencing of Real-World Activities

The DICOM media functionalities of the *syngo.share* view and *syngo.share* import AEs can be used at any time through their user interfaces.

The *webadmin* AE can be used at any time by the user or the application that performs the WADO-URI request.

### 4.1.4 File Meta Information

Implementation Class UID

1.2.276.0.7230010.3.0.3.6.1

Implementation Version Name

OFFIS\_DCMTK\_361

## 4.2 Application Entity Specification

### 4.2.1 *syngo.share* view

See [Section 3.1](#) for supported SOP Classes for the import and export of media.

**Table 20:** *syngo.share* view AE-Related Application Profiles, Real-World Activity Roles, and Roles for Interchanging

Supported Application Profiles	Real-World Activity	Role	SC Option
<i>syngo.share</i> view FSR	Read DICOM file set	FSR	Interchange

*Table 20: syngo.share view AE-Related Application Profiles, Real-World Activity Roles, and Roles for Interchanging...*



... Table 20: *syngo.share* view AE-Related Application Profiles, Real-World Activity Roles, and Roles for Interchanging

Supported Application Profiles	Real-World Activity	Role	SC Option
<i>syngo.share</i> view FSC	Export DICOM file set	FSC	Interchange

#### 4.2.1.1 Real-World Activities

##### Importing Media

The complete file set is read for displaying purposes.

##### Reading DICOMDIR Keys

All mandatory DICOMDIR keys are required in order to correctly structure the images within the file sets.

##### Creating DICOMDIRs

The *syngo.share* view AE creates DICOMDIR with all mandatory keys, as defined in DICOM 2013 PS 3.10.

##### Exporting Media

The *syngo.share* view AE is able to organize DICOM images, series and studies into a single-patient file set which is then written to portable media (e.g. CDs or DVDs). The *syngo.share* view AE, here acting as an FSC, uses the following Transfer Syntaxes:

**Table 21:** Supported *syngo.share* view Export Transfer Syntaxes

Transfer Syntax Name	Transfer Syntax UID
Explicit VR Little Endian	1.2.840.10008.1.2.1

## 4.2.2 *syngo.share* import

See [Section 3.3](#) for supported SOP Classes for the import of media.

**Table 22:** *syngo.share* import AE-Related Application Profiles, Real-World Activity Roles, and Roles for Interchanging

Supported Application Profiles	Real-World Activity	Role	SC Option
<i>syngo.share</i> import FSR	Read DICOM file set	FSR	Interchange

#### 4.2.2.1 Real-World Activities

##### Import Media

The user can choose whether a complete file set or just parts of it are read for import.

##### Reading DICOMDIR Keys

All mandatory DICOMDIR keys are required in order to correctly structure the images within the file sets.

### 4.2.3 *webadmin*

**Table 23:** WADO-URI AE-Related Application Profiles, Real-World Activity Roles, and Roles for Interchanging

Application Profiles Supported	Real World Activity	Role	SC Option
<i>webadmin</i> AE	WADO-URI Request	FSR	Interchange

#### 4.2.3.1 Real-World Activities

##### WADO-URI Request

The user of the application performing the WADO-URI request can retrieve any DICOM image that exists in *syngo.share* by identifying it with its DICOM study, series and image IDs. See DICOM 2013 PS 3.18 for more information.

## 4.3 Augmented and Private Application Profiles

Not used.

# 5 Communication Profiles

## 5.1 Supported Communication Stacks

The *DicomServer* and *EventServer* provide plain TCP (see DICOM 2013 PS 3.8, 9) and TLS-encrypted communication (see DICOM 2013 PS 3.15, B.1). They use the OFFIS DICOM Tool Kit (DCMTK) for their communication, which itself relies on the operating system it runs on.

# 6 Security Profiles

## 6.1 Audit Trail Message Format Profile

To help ensure healthcare privacy and security in automated systems, usage data needs to be collected. This data is reviewed by administrative staff to verify that healthcare data is being used in accordance with the healthcare provider's data security requirements and to establish accountability for data use. This data collection and review process is called auditing and the data itself comprises the audit trail. Audit trails can be used for surveillance purposes to detect noteworthy events that may warrant further investigation.

Auditing in *syngo.share* is implemented according to the IHE profile Audit Trail and Node Authentication (part Audit Trail), which is based on DICOM 2021a PS 3.15, A.5. Auditing is restricted to events regarding patients, documents (subsequently also collections, etc.), user authentication, hard-deletion configurations, and audit configuration:

- Search for patients or documents
- Creation, modification, or deletion of patients
- Import, modification, deletion, export, or sharing of documents
- Changing states of documents (document workflow state) or parts thereof (DICOM series thin slice state)
- Changing types of document parts (DICOM series: DICOM series type, visibility restriction type; generic file: visibility restriction type)
- Changing of information associated with documents (document logs) or parts thereof (generic file coupling)
- Login or logout of users
- Modification of hard-deletion configurations
- Modification of the audit configuration
- Creation, access, update or deletion of collections and collection cases as well as the creation or deletion of collection case items

Some events can be audited by third-party clients via interface methods provided by the *EventServer*:

- Starting or stopping of applications
- Login or logout of users
- Creation, access, update or deletion of DICOM studies
- Security alerts

The processing of audit messages works asynchronously — events are recorded immediately, but the resulting audit messages are queued and periodically sent to an Audit Record Repository via TCP (the frequency of the intervals is configurable). If required, audit messages can be analyzed with an Audit Record Viewer.

To use audit messages for effective system analyses, each audit message must be uniquely associated with a certain event. To this end, each audit message provides various kinds of information, the most important of which are:

- Event ID
- Date and time of the event

- Status of the event
- User IDs
- Application IDs
- Object IDs
- Audit trail ID (used to aggregate audit messages in order to reconstruct audit trails)
- Audit source ID

### 6.1.1 Event IDs

Within *syngo.share*, the events recorded by audit messages are primarily identified via event IDs. However, since most event IDs represent a group of events rather than a single event, it is often necessary to explore audit messages in detail to identify the reported events. The following list provides the event IDs used by *syngo.share* as well as brief instructions for identifying the associated events:

#### 110100 (Application Activity)

This event ID is used for an Application Entity starting or stopping.

#### 110102 (Begin Transferring DICOM Instances)

This event ID is used to indicate the beginning of an internal or external transfer of DICOM images. To differentiate between the two transfer types, one has to analyze the participating destination application. If the destination application represents a *syngo.share* module, then an internal transfer has been performed. If it specifies a third-party system, an external transfer has been performed.

#### 110103 (DICOM Instances Accessed)

This event ID is used in audit messages which are generated when DICOM images are created, undeleted, accessed, updated or moved. It is also used when parts of a DICOM study are deleted (when a complete DICOM study is deleted, the event ID 110105 (DICOM Study Deleted) is used instead). To differentiate between the operations mentioned, one has to analyze the event action code ID as well as the objects stated in the audit message:

- C: DICOM images have been created (externally) or undeleted (internally).
- R: DICOM images have been accessed.
- U: DICOM images have been updated or moved. The life cycle information of the DICOM images indicates which of the two operations has been executed.
- D: DICOM images of a DICOM study have been deleted.

#### 110104 (DICOM Instances Transferred)

This event ID indicates the end of an internal or external transfer of DICOM images. If the source application defines a *syngo.share* module, the end of an internal transfer has been audited. If the source application defines a third-party system, the end of an external transfer has been audited.

#### 110105 (DICOM Study Deleted)

This event ID indicates the deletion of all DICOM images of a DICOM study. The life cycle information of the DICOM study indicates whether the DICOM study has been soft-deleted or hard-deleted.

#### 110106 (Export)

This event ID indicates the export of DICOM images or generic files to a medium. Detailed information about the exported DICOM images or generic files can be obtained by analyzing the listed objects.

### 110107 (Import)

This event ID indicates the import of DICOM images or generic files from a medium or the copying of DICOM images or generic files. Detailed information about the imported DICOM images or generic files can be obtained by analyzing the listed objects.

### 110110 (Patient Record)

This event ID indicates the creation, update, merge, deletion, or undeletion of a patient. To distinguish between the different cases, one has to analyze the event action code ID as well as the objects stated in the audit message:

- C: A patient has been either created or undeleted. The life cycle information of the listed patient indicates which of the two operations has been executed.
- U: A patient has been updated or merged. The life cycle information of the listed patient indicates which of the two operations has been executed.
- D: A patient has been deleted.

### 110112 (Query)

This event ID indicates that either a DICOM C-FIND request or an SQL query has been performed. To differentiate between the two kinds of queries, one has to check if the object representing the query states a DICOM C-FIND request or an SQL query.

### 110113 (Security Alert)

We have to differentiate between an internal and an external use case:

#### ↳ Internal use case

This event ID indicates the creation, update, or deletion of a system configuration (e.g. audit configuration, hard-deletion configuration), which is denoted by the event type code 110131 (Software Configuration). To determine which operation has been performed, the life cycle information of the system configuration object has to be analyzed. Note that manipulations of the audit configuration are of particular interest because the audit configuration determines which events are audited; in this case one of the event type codes 110133 (Audit Recording Stopped) or 110134 (Audit Recording Started) is specified additionally.

#### ↳ External use case

This event ID indicates that a security alert was reported. The event type code indicates the underlying event. Currently the following security alert type codes (CID 403) are supported: 110132 (Use of Restricted Function), 110136 (Security Roles Changed), and 110137 (User Security Attributes Changed).

### 110114 (User Authentication)

This event ID is used to audit a login or logout. To differentiate between the two kinds of authentication, the event type codes have to be evaluated.

### EI-001 (Begin Transferring Generic Instances)

This event ID indicates the beginning of an internal or external transfer of generic files. To analyze the transfer type, a similar reasoning as in the case of DICOM images should be applied (see event ID 110102).

### EI-002 (Generic Instances Transferred)

This event ID indicates the end of an internal or external transfer of generic files. Similar to event ID 110104, one has to analyze the source application (*syngo.share* module versus third-party system) to obtain the exact kind of transfer.

#### ■ EI-003 (Generic Instances Accessed)

This event ID is used when generic files are accessed, updated, moved, or undeleted. It is also used when parts of a generic container are deleted (when a complete generic container is deleted, the event ID EI-004 (Generic Container Deleted) is used instead). To determine which operation has been performed, a similar reasoning as in the case of DICOM images should be applied (see event ID 110103).

#### ■ EI-004 (Generic Container Deleted)

This event ID indicates the deletion of all generic files of a generic container. The life cycle information of the generic container indicates whether the generic container has been soft-deleted or hard-deleted.

#### ■ EI-005 (DICOM Study Share)

This event ID indicates the creation or deletion of DICOM study shares. To differentiate between the two cases, the event action code ID of the audit message has to be analyzed:

- C: DICOM studies have been shared.
- D: Existing DICOM study shares have been deleted.

#### ■ EI-006 (Generic Container Share)

This event ID indicates the creation or deletion of generic container shares. To determine which operation has been performed, a similar reasoning as in the case of DICOM study shares should be applied (see event ID EI-005).

#### ■ EI-007 (DICOM Import Queue Entries Deleted)

This event ID indicates the deletion of entries in the DICOM import queue used for the asynchronous DICOM import.

#### ■ EI-008 (Document Workflow State Changed)

This event ID is used to audit changes to the workflow state of a document (i.e. a DICOM study or generic container). The audit message contains information about the user, patient, and the document, including the description of the old and new workflow state.

#### ■ EI-009 (DICOM Series Thin Slice State Changed)

This event ID indicates the change of the thin slice state of a DICOM series. The audit message contains information about the user, patient, and the document, including the old and new thin slice state.

#### ■ EI-010 (Document Logs Deleted)

This event ID is used to audit the deletion of document logs. The audit message contains information about the user, patient, and the document. The latter includes the number of deleted document logs as well as the deletion type, stating whether individual or all logs were deleted.

#### ■ EI-011 (Generic File Coupling Changed)

This event ID indicates the change of generic file couplings, whereby one such message is created per file. The audit message contains information about the user, patient, and the document (generic container). The coupling information is included in the message and is comprised of the generic file UID and each old and new coupling. For each coupling, the coupling group, coupling type, and the corresponding identifier are listed.

#### ■ EI-012 (DICOM Series DICOM Series Type Changed)

This event ID is used to audit changes to the DICOM series type of a DICOM series. The audit message contains information about the user, patient, and the document (specifying the DICOM series), including the description of the old and new DICOM series type.

#### ¶ EI-013 (DICOM Series Visibility Restriction Type Changed)

This event ID is used to audit changes to the visibility restriction type of a DICOM series. The audit message contains information about the user, patient, and the document (specifying the DICOM series), including the description of the old and new visibility restriction type.

#### ¶ EI-014 (Generic File Visibility Restriction Type Changed)

This event ID is used to audit changes to the visibility restriction type of a generic file. The audit message contains information about the user, patient, and the document (specifying the generic file), including the description of the old and new visibility restriction type.

#### ¶ EI-015 (Collection)

This event ID indicates the creation, access, update, or deletion of a collection. To distinguish between the different cases, one has to analyze the event action code ID:

- C: A collection has been created.
- R: One or more collections have been accessed.
- U: A collection has been updated, including the special case of renaming a collection (see next section).
- D: A collection has been deleted.

#### ¶ EI-016 (Collection Case)

This event ID indicates the creation, access, update, or deletion of a collection case. To distinguish between the different cases, one has to analyze the event action code ID:

- C: A collection case has been created.
- R: A collection case has been accessed.
- U: A collection case has been updated, including the special case of moving the collection case to another collection (see next section).
- D: A collection case has been deleted.

#### ¶ EI-017 (Collection Case Item)

This event ID indicates the creation or deletion of a collection case item. To distinguish between the different cases, one has to analyze the event action code ID:

- C: A collection case item has been created.
- D: A collection case item has been deleted.

## 6.1.2 Detailed Information per Event ID

To ensure that the information provided by audit messages can be used to reconstruct and understand audited events, audit messages of various event IDs are equipped with various kinds of detailed information:

#### ¶ 110102 (Begin Transferring DICOM Instances)



Audit messages with this event ID are additionally equipped with the Series Instance UIDs (SOP Instance UIDs) of the affected DICOM series (DICOM images). Note that if neither Series Instance UIDs nor SOP Instance UIDs are specified, the whole DICOM study has been involved in the event.

#### 110103 (DICOM Instances Accessed)

Similar to audit messages with event ID 110102, the Series Instance UIDs (SOP Instance UIDs) of the affected DICOM series (DICOM images) are specified. If neither Series Instance UIDs nor SOP Instance UIDs are specified, the whole DICOM study has been affected. In addition, when DICOM images are updated, detailed information about the changed values is provided. In case an empty DICOM series is created (via the corresponding interface method), the initial DICOM series type and visibility restriction type are given.

#### 110104 (DICOM Instances Transferred)

See event ID 110102. In case a DICOM series is created, the initial DICOM series type and visibility restriction type are given.

#### 110106 (Export)

Audit messages with this event ID additionally specify the Series Instance UIDs/SOP Instance UIDs/generic file UIDs of the affected DICOM series/DICOM images/generic files.

#### 110107 (Import)

See event ID 110106.

#### 110110 (Patient Record)

When a patient has been updated, audit messages with this event ID are equipped with detailed information about the changed values.

#### 110112 (Query)

When an audit message with this event ID records the execution of a C-FIND request, the transfer syntax of the C-FIND request is stated.

#### 110113 (Security Alert)

We have to differentiate between an internal and an external use case:

##### ↳ Internal use case

When a system configuration has been updated, audit messages with this event ID provide detailed information about the changed values. Additionally, the included alert description provides information on whether a system configuration has been created, updated, or deleted.

##### ↳ External use case

Further information about the underlying event is potentially provided by the alert subjects.

#### EI-001 (Begin Transferring Generic Instances)

An audit message with this event ID additionally states the generic file UIDs of the affected generic files. Note that if no generic file UIDs are listed, the whole generic container has been involved in the event.

#### EI-002 (Generic Instances Transferred)

See event ID EI-001. In case a generic file is created, the initial visibility restriction type is given.

#### EI-003 (Generic Instances Accessed)

Similar to audit messages with the event ID EI-001, the generic file UIDs of the affected generic files are specified. If no generic file UIDs are specified, the whole generic container has been affected. In addition, when generic files are updated, detailed information about the changed values is provided.

#### ¶ EI-015 (Collection)

When updating a collection, detailed information about the changed values is provided. For the special case of renaming a collection, the source collection, and per existing collection case the source collection case and the target collection case are stated in the object details of the collection.

#### ¶ EI-016 (Collection Case)

When updating a collection case, detailed information about the changed values is provided. For the special case of moving the collection case to another collection, the source collection case is stated in the object details of the collection case.

#### ¶ EI-017 (Collection Case Item)

As no dedicated object is defined for a collection case item, audit messages with this event ID specify the corresponding collection case and document objects. Regarding details of the latter refer to the event IDs 110103 and EI-003 above.

As some objects have no inherent object ID (e.g. unlike the Study Instance UID of a DICOM Study) suitable ones are therefore defined:

#### ¶ Collection

<CollectionName>:<CollectionCreationDate>  
e.g. collectionName:20210406T080000.123456

#### ¶ Collection Case

<CollectionName>:<CollectionCreationDate>:<CollectionCaseCreationDate>  
e.g. collectionName:20210406T080000.123456:20210406T080100.123456

These object IDs are used in the audit messages to refer to such objects.

### 6.1.3 Audit Trails

To simplify the analysis of audit messages generated by *syngo.share*, audit messages are organized in so-called audit trails. An audit trail represents a group of audit messages which have been created during the execution of a certain event (e.g. access of a DICOM study, deletion of DICOM images, transmission of generic files).

Audit trail messages are categorized into main and sub audit messages since an audit event may entail several sub-events. For example, the correction of patient data may require, among other things, searching for the patients whose data has to be corrected. In this example, the correction of patient data is the main audit event (thus generating a main audit message), while searching for patients is a sub-event (thus generating a sub audit message).

Each audit trail is assigned a unique audit trail ID to distinguish it from others.

### 6.1.4 Configuration of Auditing

Auditing must be configured in *syngo.share* Configuration. The most important configuration options are `AuditSystemActions` and `AuditUserActions`. The first enables the auditing of actions triggered by systems or unknown users whereas the second enables the auditing of actions triggered by registered users. Since (automatic) events triggered by third-party systems are of minor interest but can

lead to a tremendous amount of audit messages, it is recommended to enable the configuration key `AuditUserActions` but disable the configuration key `AuditSystemActions`.

For general information about auditing, please consult the *syngo.share* System Documentation.

# 7 Configuration

*syngo.share view* and *syngo.share import* provide user interfaces in order to facilitate configuration. The *DicomServer* and *EventServer* are configured according to the standard *syngo.share* server configuration mechanism which can be found in the *syngo.share* System Documentation.

# 8 Country-Specific Requirements

*syngo.share* can meet the legal requirements of a given country, and in compliance with the IHE Technical Framework. *syngo.share* applies country-specific changes to DICOM communication at the tenant level, i.e. according to the country set in the tenant settings. This chapter describes how *syngo.share* handles specific countries.

## 8.1 France

French law mandates special requirements for medical communication (see the IHE Technical Framework National Extensions chapter for details). To fulfil these requirements, *syngo.share* core can automatically modify DICOM elements. Care has been taken to ensure that these implicit modifications are applied at the correct point in the chain of events to ensure that forbidden data is never archived or transmitted.

When processing C-STORE requests, the following DICOM Element values are cleared automatically:

- EthnicGroup (0010, 2160)
- PatientReligiousPreference (0010, 21F0)

# 9 Support of Extended Character Sets

## 9.1 Supported Character Sets

Table 24 contains the character sets which are supported with and without code extension techniques. If the given specific character set does not correspond to the characters in an IOD or the specific character set is invalid, the DICOM dataset is not processed. In these cases, a configuration can be used to correct the character set. Due to practical reasons, the specific character set is used instead of the default character repertoire to process tags with VR CS.

Table 24: Supported Character Sets

MIME Name	Without Code Extensions	With Code Extensions
US-ASCII		ISO 2022 IR 6
ISO-8859-1	ISO_IR 100	ISO 2022 IR 100
ISO-8859-2	ISO_IR 101	ISO 2022 IR 101
ISO-8859-3	ISO_IR 109	ISO 2022 IR 109
ISO-8859-4	ISO_IR 110	ISO 2022 IR 110
ISO-8859-5	ISO_IR 144	ISO 2022 IR 144
ISO-8859-6	ISO_IR 127	ISO 2022 IR 127
ISO-8859-7	ISO_IR 126	ISO 2022 IR 126
ISO-8859-8	ISO_IR 138	ISO 2022 IR 138
ISO-8859-9	ISO_IR 148	ISO 2022 IR 148
JIS_X0201	ISO_IR 13	ISO 2022 IR 13
TIS-620	ISO_IR 166	ISO 2022 IR 166
JIS_X0208-1990	-	ISO 2022 IR 87
JIS_X0212-1990	-	ISO 2022 IR 159
KS_X_1001-1997	-	ISO 2022 IR 149
GB2312	-	ISO 2022 IR 58
UTF-8	ISO_IR 192	-
GB18030	GB18030	-
GBK	GBK	-

## 9.2 Configuration Capabilities

The specific character set of a C-STORE request can be corrected with a configuration. Furthermore, the specific character set of the C-FIND request and response can be configured. For example, the specific character set configuration values could be set to 'ISO\_IR 192', 'ISO\_IR 100', 'ISO 2022 IR 100', 'ISO 2022 IR 87', etc.

## 9.3 Query Capabilities

During the processing of the C-FIND query attributes, the specific character set of the request is considered. By default, the response is encoded in ISO\_IR 192 (UTF-8). If an alternate specific character set is configured for a C-FIND response, all characters which are not part of the given character set are exchanged with the replacement character '?'. If the query contains the attribute PatientName, only the

alphabetic component group is used for searching. In the response, attributes with the value representation PN contain all component groups (alphabetic, ideographic and phonetic).

# A DICOM Element List for Query/Retrieve Service Classes

The following table lists the DICOM keys used for matching on the patient, study, series and image level in C-FIND requests. All keys are supported for matching and response. The matching of person name fields is case-insensitive. The attribute `Specific Character Set (0008,0005)` shall be included if expanded; replacement character sets may be used in any of the attributes in the Request Identifier.

## A.1 Supported C-FIND Element Requests on the Patient Level

**Table 25:** Supported C-FIND Elements on the Patient Level

Keyword	Tag	Remark
PatientID	(0010,0020)	
PatientName	(0010,0010)	
PatientBirthDate	(0010,0030)	Combined Date/Time Matching supported
PatientBirthTime	(0010,0032)	Combined Date/Time Matching supported
PatientSex	(0010,0040)	
PatientBirthName	(0010,1005)	
OtherPatientIDs	(0010,1000)	

## A.2 Supported C-FIND Element Requests on the Study Level

In case of a Study Root Query/Retrieve where no patient level exists, all mentioned patient level keys are supported on the study level.

**Table 26:** Supported C-FIND Elements on the Study Level

Keyword	Tag	Remark
StudyInstanceUID	(0020,000D)	
StudyDate	(0008,0020)	Combined Date/Time Matching supported
StudyTime	(0008,0030)	Combined Date/Time Matching supported
StudyDescription	(0008,1030)	
AccessionNumber	(0008,0050)	
StudyID	(0020,0010)	
NumberOfStudyRelatedSeries	(0020,1206)	
NumberOfStudyRelatedInstances	(0020,1208)	
ReferringPhysicianName	(0008,0090)	
ModalitiesInStudy	(0008,0061)	Multiple values are supported and combined using a logical OR.

## A.3 Supported C-FIND Element Requests on the Series Level



**Table 27: Supported C -FIND Elements on the Series Level**

Keyword	Tag	Remark
SeriesInstanceUID	(0020,000E)	
Modality	(0008,0060)	
SeriesNumber	(0020,0011)	
SeriesDescription	(0008,103E)	
NumberOfSeriesRelatedInstances	(0020,1209)	
InstitutionName	(0008,0080)	
InstitutionalDepartmentName	(0008,1040)	
StationName	(0008,1010)	
PerformingPhysicianName	(0008,1050)	
Manufacturer	(0008,0070)	
ManufacturerModelName	(0008,1090)	
BodyPartExamined	(0018,0015)	
OperatorsName	(0008,1070)	
PerformedProcedureStepStartDate	(0040,0244)	Combined Date/Time Matching supported
PerformedProcedureStepStartTime	(0040,0245)	Combined Date/Time Matching supported
PerformedProcedureStepEndDate	(0040,0250)	Combined Date/Time Matching supported
PerformedProcedureStepEndTime	(0040,0251)	Combined Date/Time Matching supported
SeriesDate	(0008,0021)	Combined Date/Time Matching supported
SeriesTime	(0008,0031)	Combined Date/Time Matching supported
RequestAttributesSequence/ RequestedProcedureID	(0040,0275)/ (0040,1001)	
RequestAttributesSequence/ ScheduledProcedureStepID	(0040,0275)/ (0040,0009)	

## A.4 Supported C -FIND Element Requests on the Image Level

**Table 28: Supported C -FIND Elements on the Image Level**

Keyword	Tag	Remark
SOPInstanceUID	(0008,0018)	
InstanceNumber	(0020,0013)	
SOPClassUID	(0008,0016)	
Rows	(0028,0010)	
Columns	(0028,0011)	
BitsAllocated	(0028,0100)	
BitsStored	(0028,0101)	
SamplesPerPixel	(0028,0002)	
NumberOfFrames	(0028,0008)	

Table 28: Supported C -FIND Elements on the Image Level...

... Table 28: Supported C-FIND Elements on the Image Level

Keyword	Tag	Remark
ContentTemplateSequence/ TemplateIdentifier	(0040,A504)/ (0040,DB00)	Needs SOP Class from <a href="#">Table 29</a>
ContentTemplateSequence/ MappingResource	(0040,A504)/ (0008,0105)	Needs SOP Class from <a href="#">Table 29</a>
ContentDate	(0008,0023)	Needs SOP Class from <a href="#">Table 29</a>
ContentTime	(0008,0033)	Needs SOP Class from <a href="#">Table 29</a>
ObservationDateTime	(0040,A032)	Needs SOP Class from <a href="#">Table 29</a>
ReferencedRequestSequence/ StudyInstanceUID	(0040,A370)/ (0020,000D)	Needs SOP Class from <a href="#">Table 29</a>
ReferencedRequestSequence/ AccessionNumber	(0040,A370)/ (0008,0050)	Needs SOP Class from <a href="#">Table 29</a>
ReferencedRequestSequence/ RequestedProcedureID	(0040,A370)/ (0040,1001)	Needs SOP Class from <a href="#">Table 29</a>
ReferencedRequestSequence/ RequestedProcedureCodeSequence/ CodeValue	(0040,A370)/ (0032,1064)/ (0008,0100)	Needs SOP Class from <a href="#">Table 29</a>
ReferencedRequestSequence/ RequestedProcedureCodeSequence/ CodingSchemeDesignator	(0040,A370)/ (0032,1064)/ (0008,0102)	Needs SOP Class from <a href="#">Table 29</a>
ReferencedRequestSequence/ RequestedProcedureCodeSequence/ CodingSchemeVersion	(0040,A370)/ (0032,1064)/ (0008,0103)	Needs SOP Class from <a href="#">Table 29</a>
ReferencedRequestSequence/ RequestedProcedureCodeSequence/ CodeMeaning	(0040,A370)/ (0032,1064)/ (0008,0104)	Needs SOP Class from <a href="#">Table 29</a>
ConceptNameCodeSequence/ CodeValue	(0040,A043)/ (0008,0100)	Needs SOP Class from <a href="#">Table 29</a>
ConceptNameCodeSequence/ CodingSchemeDesignator	(0040,A043)/ (0008,0102)	Needs SOP Class from <a href="#">Table 29</a>
ConceptNameCodeSequence/ CodingSchemeVersion	(0040,A043)/ (0008,0103)	Needs SOP Class from <a href="#">Table 29</a>
ConceptNameCodeSequence/ CodeMeaning	(0040,A043)/ (0008,0104)	Needs SOP Class from <a href="#">Table 29</a>
CompletionFlag	(0040,A491)	Needs SOP Class from <a href="#">Table 29</a>
VerificationFlag	(0040,A493)	Needs SOP Class from <a href="#">Table 29</a>
VerifyingObserverSequence/ VerifyingOrganization	(0040,A073)/ (0040,A027)	Needs SOP Class from <a href="#">Table 29</a>
VerifyingObserverSequence/ VerificationDateTime	(0040,A073)/ (0040,A030)	Needs SOP Class from <a href="#">Table 29</a>
VerifyingObserverSequence/ VerifyingObserverName	(0040,A073)/ (0040,A075)	Needs SOP Class from <a href="#">Table 29</a>
VerifyingObserverSequence/ VerifyingObserverIdentificationCodeSequ CodeValue	(0040,A073)/ (0040,A088)/ (0008,0100)	Needs SOP Class from <a href="#">Table 29</a>
VerifyingObserverSequence/ VerifyingObserverIdentificationCodeSequ CodingSchemeDesignator	(0040,A073)/ (0040,A088)/ (0008,0102)	Needs SOP Class from <a href="#">Table 29</a>

Table 28: Supported C-FIND Elements on the Image Level...

... Table 28: Supported C-FIND Elements on the Image Level

Keyword	Tag	Remark
VerifyingObserverSequence/ VerifyingObserverIdentificationCodeSequ CodingSchemeVersion	(0040,A073)/ (0040,A088)/ (0008,0103)	Needs SOP Class from <a href="#">Table 29</a>
VerifyingObserverSequence/ VerifyingObserverIdentificationCodeSequ CodeMeaning	(0040,A073)/ (0040,A088)/ (0008,0104)	Needs SOP Class from <a href="#">Table 29</a>
ContentLabel	(0070,0080)	Needs SOP Class from <a href="#">Table 29</a>
ContentDescription	(0070,0081)	Needs SOP Class from <a href="#">Table 29</a>
PresentationCreationDate	(0070,0082)	Needs SOP Class from <a href="#">Table 29</a>
PresentationCreationTime	(0070,0083)	Needs SOP Class from <a href="#">Table 29</a>
ContentCreatorName	(0070,0084)	Needs SOP Class from <a href="#">Table 29</a>
ReferencedSeriesSequence/ SeriesInstanceUID	(0008,1115)/ (0020,000E)	Needs SOP Class from <a href="#">Table 29</a>
ReferencedSeriesSequence/ ReferencedImageSequence/ ReferencedSOPClassUID	(0008,1115)/ (0008,1140)/ (0008,1150)	Needs SOP Class from <a href="#">Table 29</a>
ReferencedSeriesSequence/ ReferencedImageSequence/ ReferencedSOPInstanceUID	(0008,1115)/ (0008,1140)/ (0008,1155)	Needs SOP Class from <a href="#">Table 29</a>

**Table 29: SOP Classes That Support Additional Query Elements**

SOP Class Name	SOP Class UID
Grayscale Softcopy Presentation State Storage	1.2.840.10008.5.1.4.1.1.11.1
Color Softcopy Presentation State Storage	1.2.840.10008.5.1.4.1.1.11.2
Pseudo-Color Softcopy Presentation State Storage	1.2.840.10008.5.1.4.1.1.11.3
Blending Softcopy Presentation State Storage	1.2.840.10008.5.1.4.1.1.11.4
XA/XRF Grayscale Softcopy Presentation State Storage	1.2.840.10008.5.1.4.1.1.11.5
Grayscale Planar MPR Volumetric Presentation State Storage	1.2.840.10008.5.1.4.1.1.11.6
Compositing Planar MPR Volumetric Presentation State Storage	1.2.840.10008.5.1.4.1.1.11.7
Advanced Blending Presentation State Storage	1.2.840.10008.5.1.4.1.1.11.8
Volume Rendering Volumetric Presentation State Storage	1.2.840.10008.5.1.4.1.1.11.9
Segmented Volume Rendering Volumetric Presentation State Storage	1.2.840.10008.5.1.4.1.1.11.10
Multiple Volume Rendering Volumetric Presentation State Storage	1.2.840.10008.5.1.4.1.1.11.11
Text SR Storage - Trial (Retired)	1.2.840.10008.5.1.4.1.1.88.1
Audio SR Storage - Trial (Retired)	1.2.840.10008.5.1.4.1.1.88.2
Detail SR Storage - Trial (Retired)	1.2.840.10008.5.1.4.1.1.88.3
Comprehensive SR Storage - Trial (Retired)	1.2.840.10008.5.1.4.1.1.88.4
Basic Text SR Storage	1.2.840.10008.5.1.4.1.1.88.11
Enhanced SR Storage	1.2.840.10008.5.1.4.1.1.88.22
Comprehensive SR Storage	1.2.840.10008.5.1.4.1.1.88.33
Comprehensive 3D SR Storage	1.2.840.10008.5.1.4.1.1.88.34
Extensible SR Storage	1.2.840.10008.5.1.4.1.1.88.35
Mammography CAD SR Storage	1.2.840.10008.5.1.4.1.1.88.50
Key Object Selection Document Storage	1.2.840.10008.5.1.4.1.1.88.59

Table 29: SOP Classes That Support Additional Query Elements...

SOP Class Name	SOP Class UID
Chest CAD SR Storage	1.2.840.10008.5.1.4.1.1.88.65
X-Ray Radiation Dose SR Storage	1.2.840.10008.5.1.4.1.1.88.67
Radiopharmaceutical Radiation Dose SR Storage	1.2.840.10008.5.1.4.1.1.88.68
Colon CAD SR Storage	1.2.840.10008.5.1.4.1.1.88.69
Implantation Plan SR Document Storage	1.2.840.10008.5.1.4.1.1.88.70
Acquisition Context SR Storage	1.2.840.10008.5.1.4.1.1.88.71
Simplified Adult Echo SR Storage	1.2.840.10008.5.1.4.1.1.88.72
Patient Radiation Dose SR Storage	1.2.840.10008.5.1.4.1.1.88.73
Planned Imaging Agent Administration SR Storage	1.2.840.10008.5.1.4.1.1.88.74
Performed Imaging Agent Administration SR Storage	1.2.840.10008.5.1.4.1.1.88.75

## A.5 Supported C-FIND Element Requests Issued by syngo.share view on the Study Level

**Table 30:** Supported C-FIND Element Requests Issued by syngo.share view on the Study Level

Keyword	Tag	Remark
PatientID	(0010,0020)	
PatientName	(0010,0010)	
PatientBirthDate	(0010,0030)	
PatientSex	(0010,0040)	
PatientBirthName	(0010,1005)	
StudyDate	(0008,0020)	
StudyDescription	(0008,1030)	
AccessionNumber	(0008,0050)	
ModalitiesInStudy	(0008,0061)	
StudyInstanceUID	(0020,000d)	
NumberOfStudyRelatedSeries	(0020,1206)	
NumberOfStudyRelatedInstances	(0020,1208)	

## B List of Elements for Modality Worklist

### C - FIND Requests

Modality worklist queries support all C-FIND elements from the patient level. The attribute Specific Character Set (0008,0005) will be included if expanded; replacement character sets may be used in any of the attributes in the Request Identifier.

Table 31: Supported C-FIND Modality Worklist Keywords

Key	Tag	Remark
AdmissionID	(0038,0010)	
AdmittingDate	(0038,0020)	Combined Date/Time Matching supported
AdmittingTime	(0038,0021)	Combined Date/Time Matching supported
CurrentPatientLocation	(0038,0300)	
ConfidentialityConstraintOnPatientDataDi	(0040,3001)	
PregnancyStatus	(0010,21C0)	
ReferringPhysicianName	(0008,0090)	
ScheduledProcedureStepSequence/ ScheduledStationAETitle	(0040,0100)/ (0040,0001)	
ScheduledProcedureStepSequence/ ScheduledProcedureStepStartDate	(0040,0100)/ (0040,0002)	Combined Date/Time Matching supported
ScheduledProcedureStepSequence/ ScheduledProcedureStepStartTime	(0040,0100)/ (0040,0003)	Combined Date/Time Matching supported
ScheduledProcedureStepSequence/ Modality	(0040,0100)/ (0008,0060)	
ScheduledProcedureStepSequence/ ScheduledPerformingPhysicianName	(0040,0100)/ (0040,0006)	
ScheduledProcedureStepSequence/ ScheduledProcedureStepDescription	(0040,0100)/ (0040,0007)	no matching, response only
ScheduledProcedureStepSequence/ ScheduledProcedureStepID	(0040,0100)/ (0040,0009)	
ScheduledProcedureStepSequence/ ScheduledProtocolCodeSequence/ CodeValue	(0040,0100)/ (0040,0008)/ (0008,0100)	no matching, response only
ScheduledProcedureStepSequence/ ScheduledProtocolCodeSequence/ CodingSchemeDesignator	(0040,0100)/ (0040,0008)/ (0008,0102)	no matching, response only
ScheduledProcedureStepSequence/ ScheduledProtocolCodeSequence/ CodeMeaning	(0040,0100)/ (0040,0008)/ (0008,0104)	no matching, response only
ScheduledProcedureStepSequence/ RequestedProcedureCodeSequence/ CodeValue	(0040,0100)/ (0032,1064)/ (0008,0100)	no matching, response only
ScheduledProcedureStepSequence/ RequestedProcedureCodeSequence/ CodingSchemeDesignator	(0040,0100)/ (0032,1064)/ (0008,0102)	no matching, response only

Table 31: Supported C-FIND Modality Worklist Keywords...

... Table 31: Supported C-FIND Modality Worklist Keywords

Key	Tag	Remark
ScheduledProcedureStepSequence/ RequestedProcedureCodeSequence/ CodeMeaning	(0040,0100)/ (0032,1064)/ (0008,0104)	no matching, response only
RequestedProcedureID	(0040,1001)	
RequestedProcedureDescription	(0032,1060)	no matching, response only
StudyInstanceUID	(0020,000D)	
AccessionNumber	(0008,0050)	
RequestingPhysician	(0032,1032)	
OrderCallbackPhoneNumber	(0040,2010)	
PlacerOrderNumberImagingServiceReque	(0040,2016)	
FillerOrderNumberImagingServiceReques	(0040,2017)	
OrderEntererLocation	(0040,2009)	
PatientState	(0038,0500)	
MedicalAlerts	(0010,2000)	

---

**Distributed by**

Siemens Healthcare GmbH  
Henkestr. 127  
91052 Erlangen  
Germany  
Phone: +49 9131 84-0  
siemens-healthineers.com

**Legal Manufacturer**

ITH icoserve technology for healthcare GmbH  
Innrain 98  
6020 Innsbruck  
Austria  
Phone: +43 512 89059

*Made in Austria*